



GLOBALINK  
LOGISTICS

# 45 FT REFRIGERATED RAILWAY CONTAINER

April 2022



EURASIA FOCUSED  
CHINA SPECIALIST  
GLOBAL NETWORK



**FOUNDED IN 1994**



**COUNTRIES**

**16**



**TRUCKS**

**250+**



**EMPLOYEES**

**1500+**



**SERVICE POINTS**

**36+**

## SERVICES PROVIDED:



### **Air Freight**

Charters, Consolidations,  
Express shipments



### **Customs & Brokerage**

Import / Export / Transit  
Clearance



### **Project Logistics**

Dangerous cargo handling,  
Heavy lifting, EPC contracting



### **Sea Freight**

FCL and LCL services,  
Project Cargos, Breakbulk



### **Rail Freight**

Block train operations, Bulk cargo  
handling, FCL and LCL services



### **Road Freight**

Cross-border trucking, Distribution,  
Bonded / Non-bonded trucking



### **Warehousing & Distribution**

Cargo distribution by road, rail  
and air, 3PL



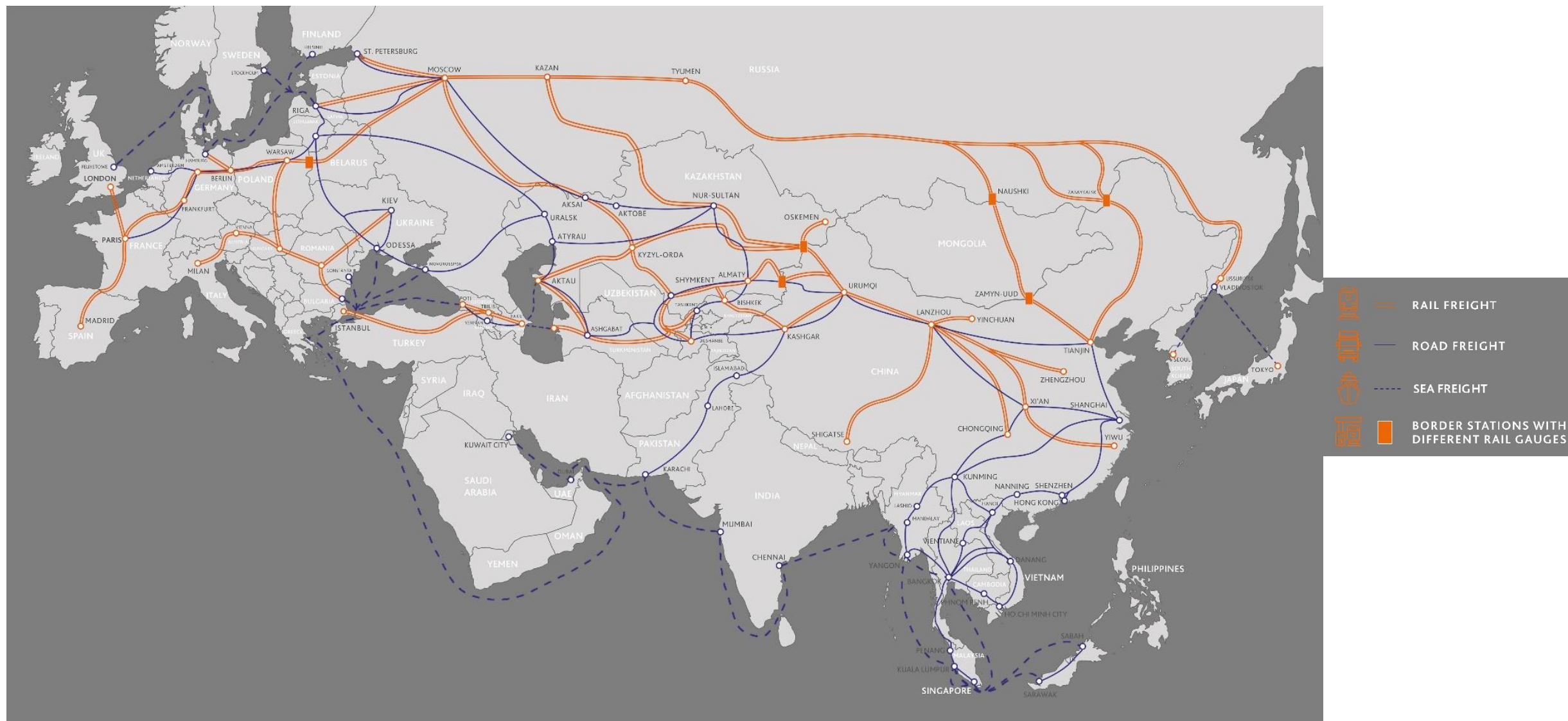
### **Removals & Relocation**

Household goods, Pets, Art,  
Office and Auto Moving Service

# OUR EURASIAN TRANSPORT NETWORK



GLOBALINK  
LOGISTICS



## MAIN TECHNICAL PARAMETERS OF 45FT REFRIGERATED RAILWAY CONTAINER



GLOBALINK  
LOGISTICS

- External dimensions: 13716mm×2438mm×2896mm
- Internal dimensions: 12716mm×2294mm×2554mm
- The maximum gross weight: 34000kg
- The dead weight (maintenance state): 6800—7180kg
- Internal volume: 74.5m<sup>3</sup>
- Fuel tank capacity: 470/543L, the min duration is about 240 hours
- Charging voltage: 380V
- Temperature range in the container: -29°C ~ +27°C
- Operating ambient temperature range: -40°C ~ 80°C
- Refrigerant adopts R404a
- Foaming agent uses polyurethane materials
- Air tightness (M3/hr) ≤8.5
- Heat leakage rate (KCAL/hr.°C) ≤41.3
- Three laterals is the maximum seacking of heavy containers
- With automatic monitoring, automatic control, two-way communication and other intelligent functions





# THE INTRODUCTION OF THE CABINET APPEARANCE



GLOBALINK  
LOGISTICS



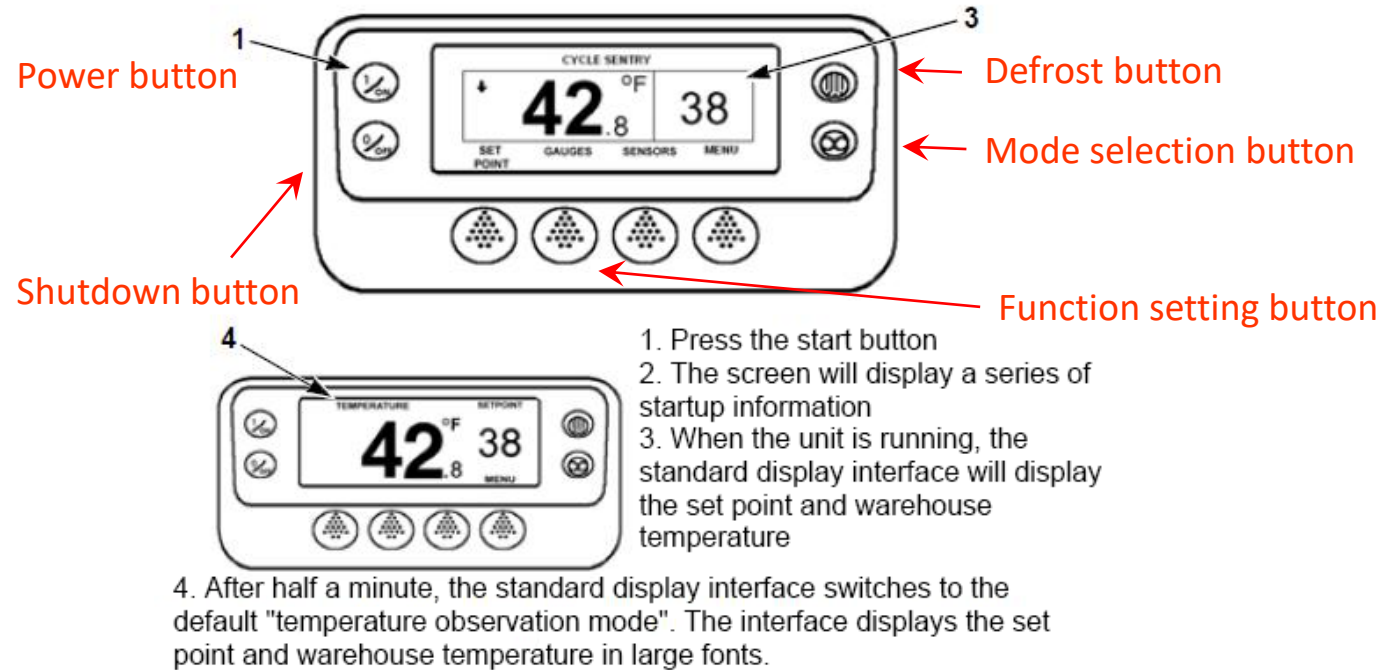
# THE INTRODUCTION OF THE CABINET APPEARANCE



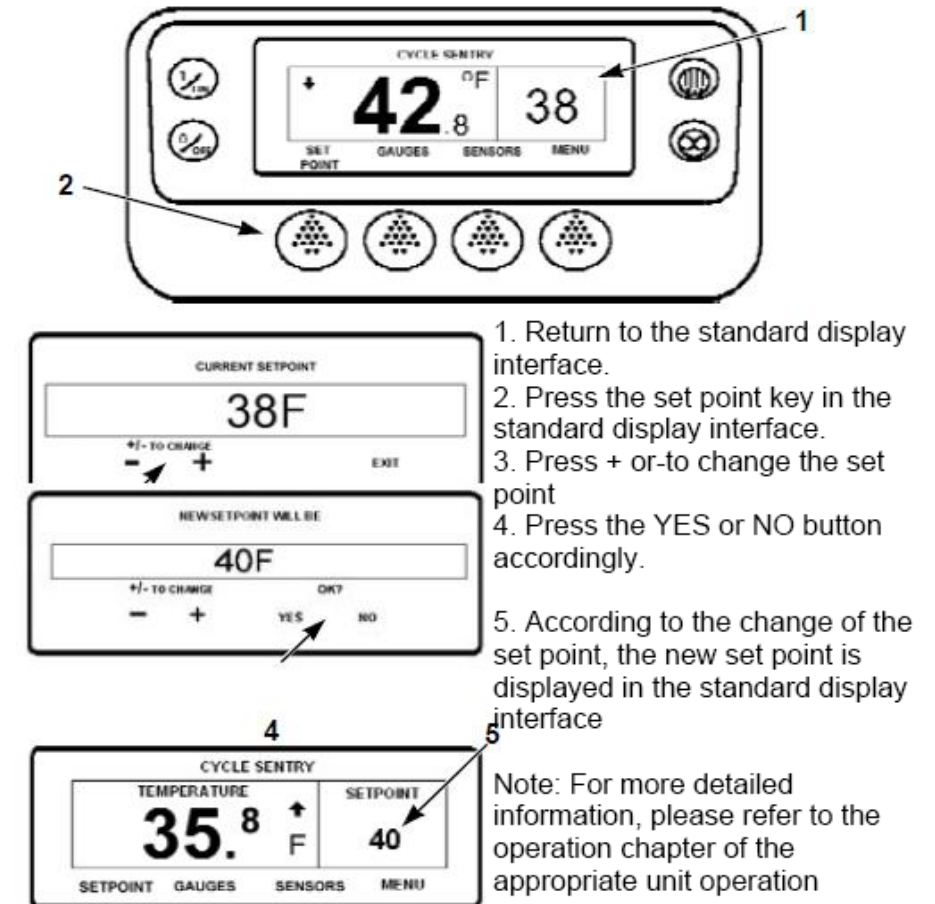
GLOBALINK  
LOGISTICS



# THE OPERATION OF THE REFRIGERATOR



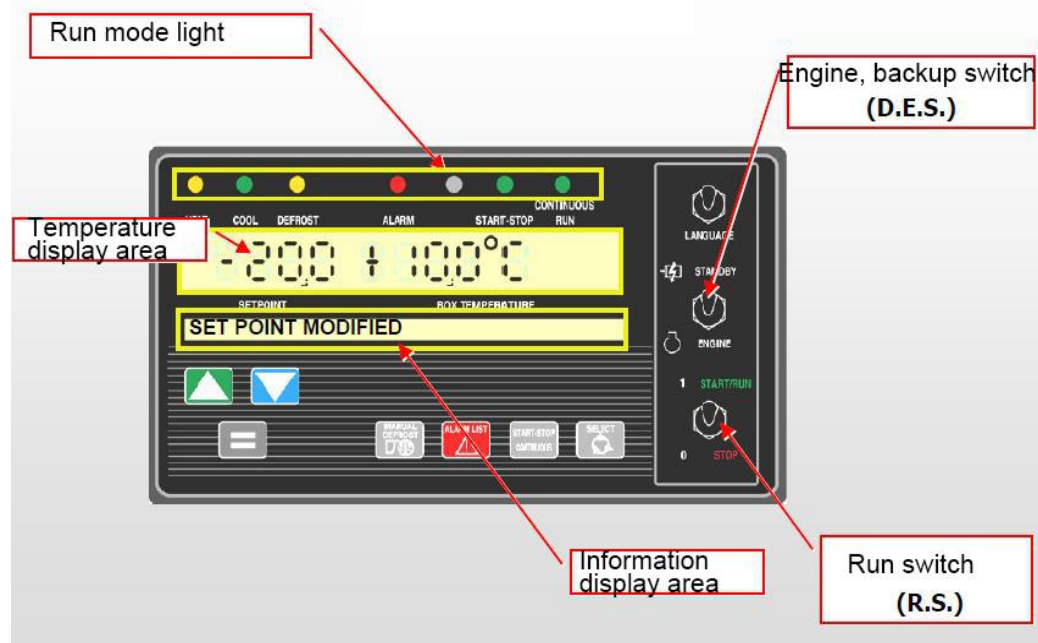
The Cold King Refrigerator: Boot and operation page



The Cold King Refrigerator: Set temperature

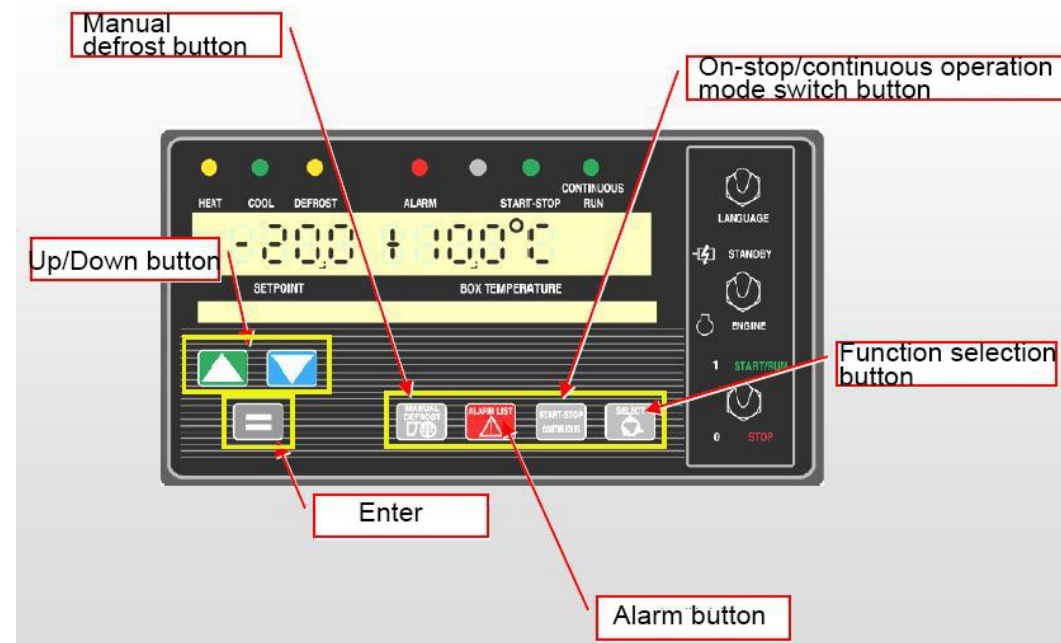


## Buttons and display



The refrigerator Carrier

## Buttons and display



The refrigerator Carrier



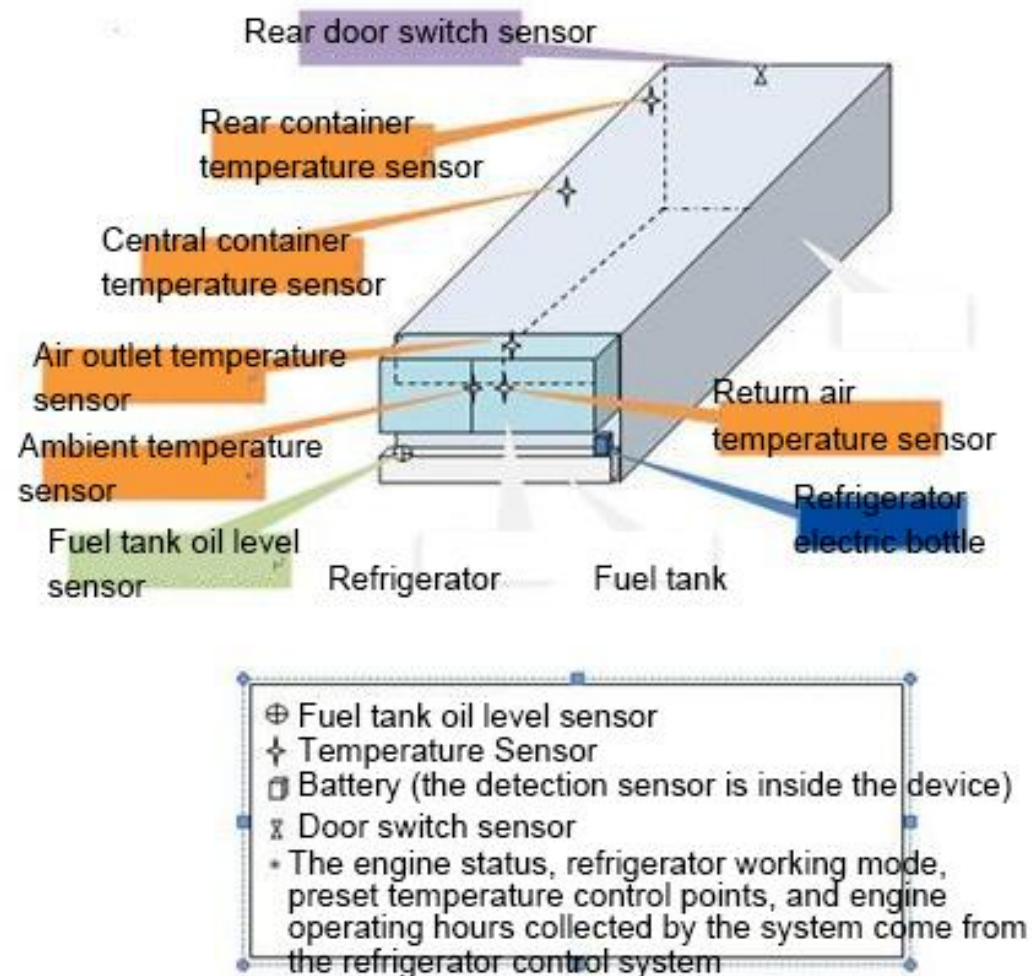
- The refrigerator has intelligent functions such as automatic monitoring, automatic control, and two-way communication.
- Position positioning is achieved through GPS, and then through the GPRS two-way communication function, the position, temperature, cold machine status and other information collected from the refrigerator are uploaded to the background information system, and users and monitoring managers can conduct real-time positioning and query through the Internet. Historical track query, remote control and other functions.
- At present, the refrigeration unit realizes the functions of remotely adjusting the temperature in the container, remotely clearing fault codes, and remotely turning on and off the machine.

## **Common operations of the refrigerator:**

- turn on
- set the temperature
- manual defrost
- check before driving
- switch the refrigerator operating mode
- query the running time
- clear the alarm, etc.

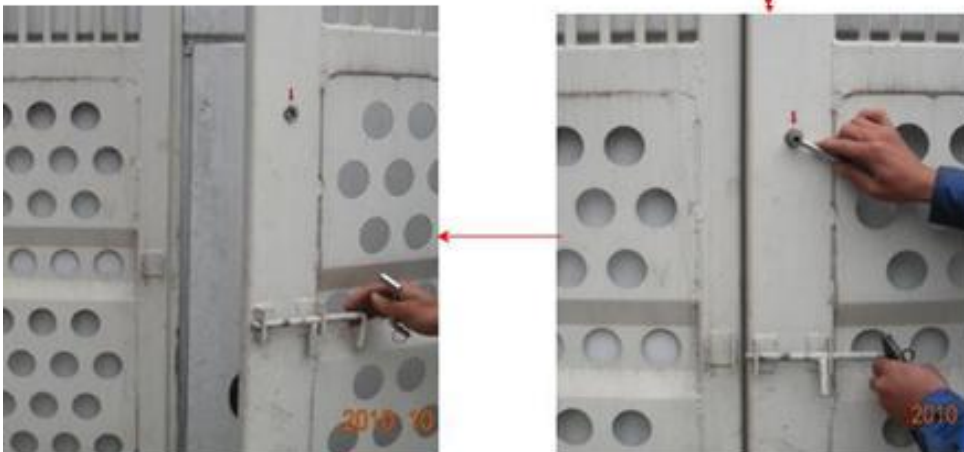
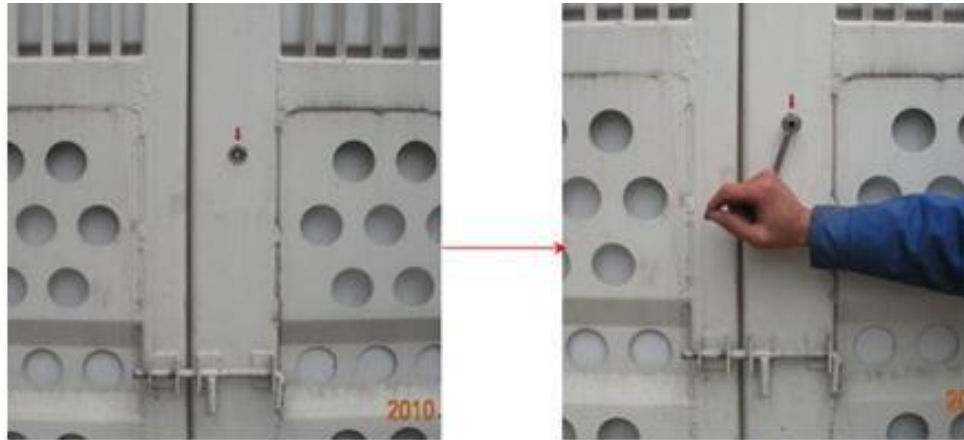
Please refer to the operating manual for specific operations!

---



The schematic diagram of refrigerator sensor

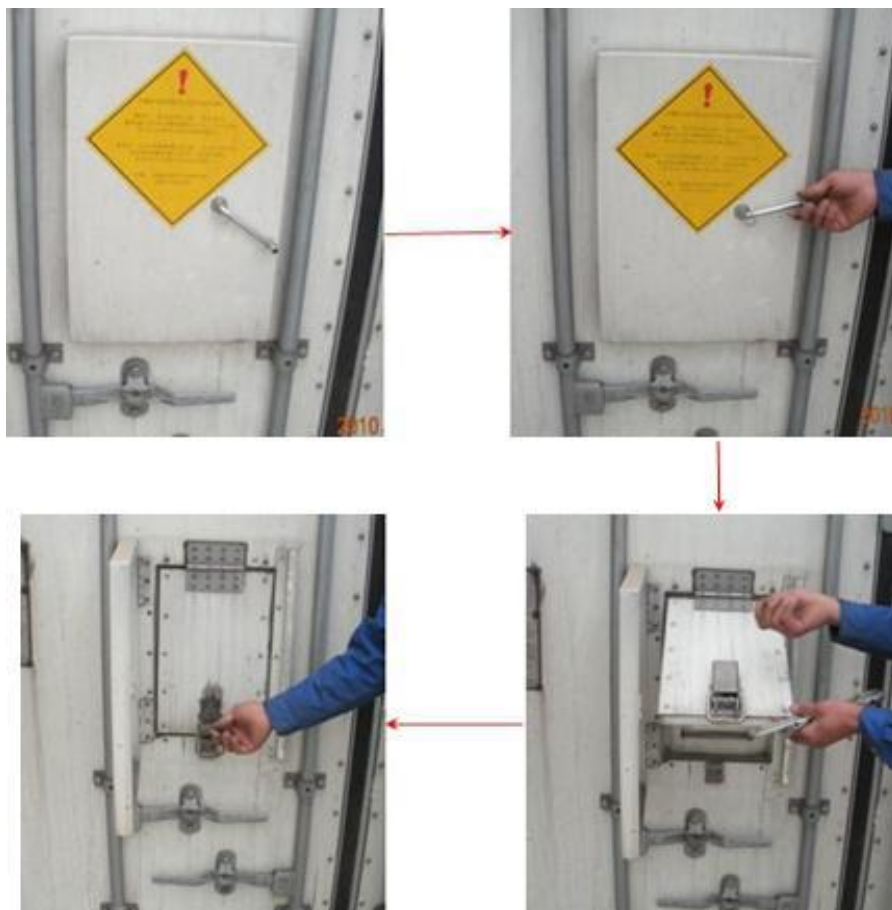
# THE OPERATION OF THE REFRIGERATOR



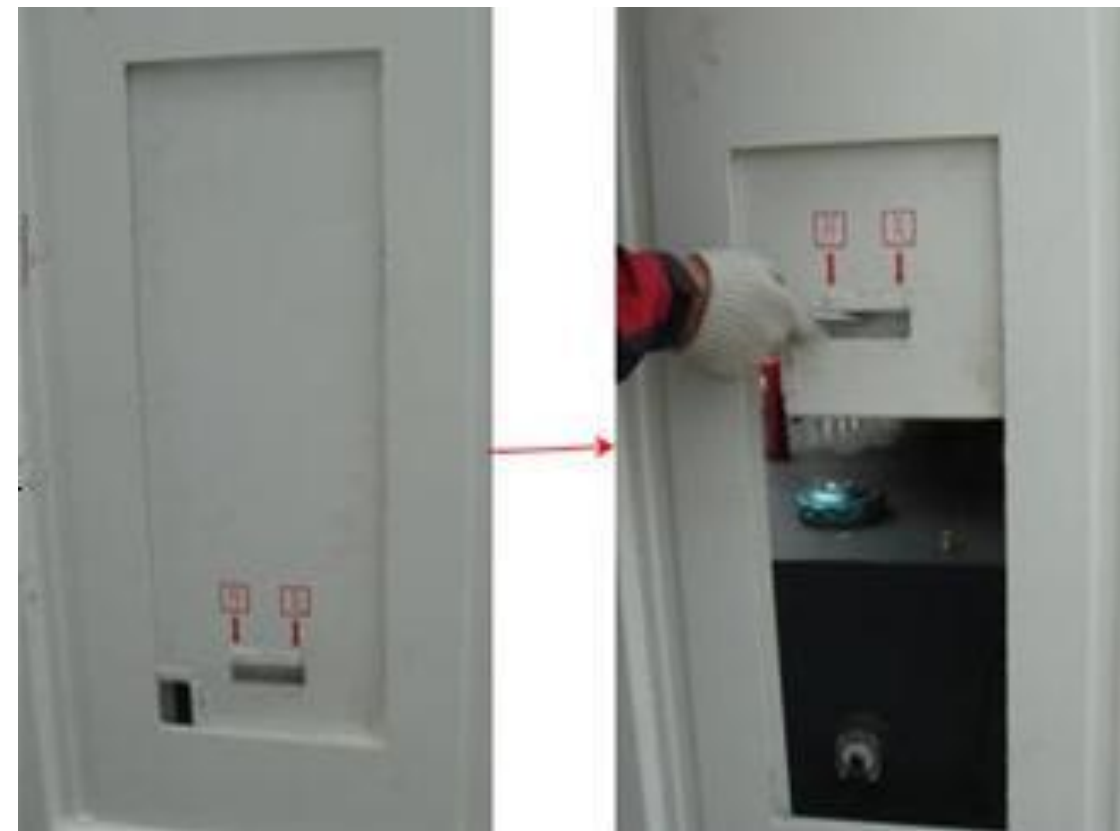
The operation of the front doors of the protective frame



The operation of the rear doors

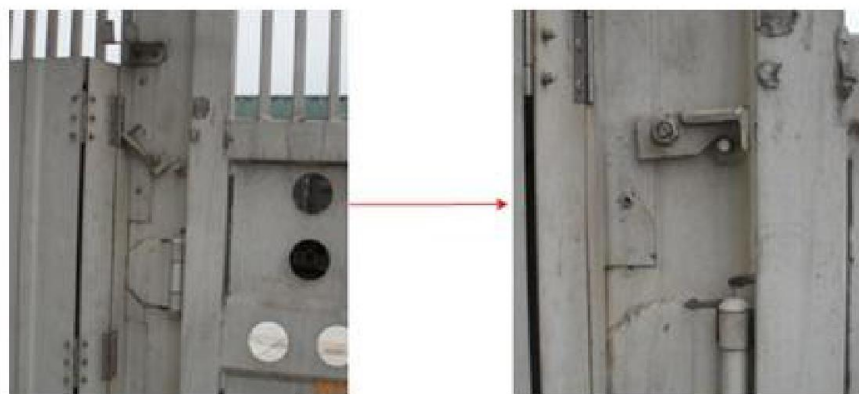


The operation of ventilators

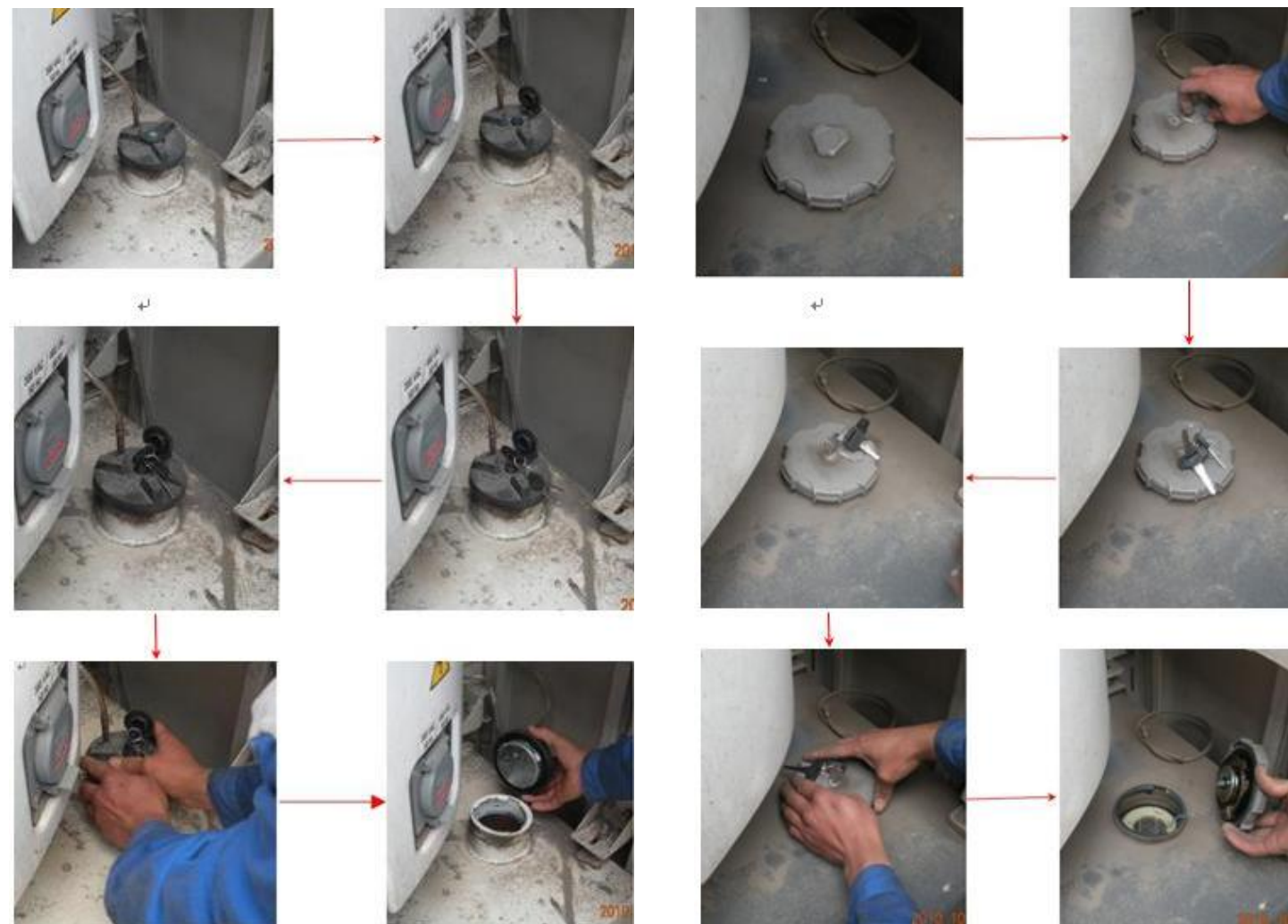


The operation of the small side doors of the protective frame





Support operation process when the front door is opened



The operation of the fuel tank cap



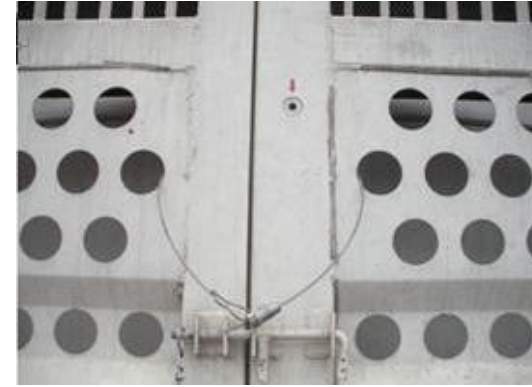
T-shaped floor



Drain hole

**Note:**

Check the sanitation in the container before shipment, keep the T-shaped floor groove and drain hole clean, ensure that there is no impurities, and avoid affecting the normal circulation of air-conditioning!



**Note:**

In order to ensure the safe transportation of the refrigerated railway container, in addition to locking the front door lock box of the refrigerator protection frame and inserting the door bolt as required, it is also necessary to bind with a reinforcement lock.



**Note:** When loading cargo, in order not to affect the air circulation in the container, a certain amount of air circulation space must be left. Therefore, the cargo loading height cannot exceed the red line of the height limit in the container; the distance between the red line of the tail of the T-shaped floor and the door end is about 150mm , Just to the edge of the T-shaped floor



**Cooling cargo:** For different types of goods, according to the technical requirements of the "Fresh Regulations", set up different loading and reinforcement plans, such as fruits, vegetables, etc., which need to be analyzed in detail, combined with seasons, the technical status of the refrigerated container, etc., to formulate loading reinforcement Program.

# THE PROBATIONAL SITUATION



GLOBALINK  
LOGISTICS



With the strong support of the leaders of the Ministry of Railways and the relevant departments of China Railway Containers, and with the joint efforts of all the company's colleagues, the trial operation has made phased progress. We have cooperated with more than ten customers, including Sanquan, Missing, Yili, Mengniu, General Mills and Henan Dayong, which are among the best in the domestic food industry. The trial products include quick-frozen rice noodles, frozen meat, ice cream, fruits, etc.





Sugar oranges



Xinjiang grapes



General Mills



Ice cream

# CONTACT PROFILE



## PROFILE

DUBAI HQ, Building A5, Office 107 & 108, DWC South Business Park, Dubai, UAE  
T +971 4 8813970 | E [dubai@globalinklogistics.com](mailto:dubai@globalinklogistics.com)

ALMATY HQ, 52, Kabanbai Batyr Street, 050010 Almaty, Kazakhstan  
T +7 727 2588880 | E [sales@globalinklogistics.com](mailto:sales@globalinklogistics.com)



| NAME              | POSITION                                | CONTACT DETAILS  |
|-------------------|---|--|
| Siddique Khan     | CEO                                     | <a href="mailto:s.khan@globalinklogistics.com">s.khan@globalinklogistics.com</a>           |
| Aftab Ahmed       | Group General Manager Corporate         | <a href="mailto:a.ahmed@globalinklogistics.com">a.ahmed@globalinklogistics.com</a>         |
| Vasily Dovzhenko  | General Manager, Airfreight             | <a href="mailto:v.dovzhenko@globalinklogistics.com">v.dovzhenko@globalinklogistics.com</a> |
| Ildus Bariev      | General Manager, Projects Rail & Ocean  | <a href="mailto:i.bariev@globalinklogistics.com">i.bariev@globalinklogistics.com</a>       |
| Karamat Bhat      | General Manager, Road Freight           | <a href="mailto:k.bhat@globalinklogistics.com">k.bhat@globalinklogistics.com</a>           |
| Dmitrijs Jelutins | Regional General Manager, Baltic States | <a href="mailto:d.jelutins@globalinklogistics.com">d.jelutins@globalinklogistics.com</a>   |
| Pasha Karim       | Regional General Manager, Sales         | <a href="mailto:p.karim@globalinklogistics.com">p.karim@globalinklogistics.com</a>         |

# THANK YOU

VALUE CREATION  
OPENNESS  
INTEGRITY  
COMMITMENT  
EXCELLENCE

