



GLOBALINK
LOGISTICS

CHINA – CIS – EUROPE EUROPE – CIS – CHINA ROAD FREIGHT SERVICE

April 2022



EURASIA FOCUSED
CHINA SPECIALIST
GLOBAL NETWORK

GLOBALINK FACT SHEET



GLOBALINK
LOGISTICS



FOUNDED IN 1994



COUNTRIES

16



TRUCKS

250+



EMPLOYEES

1500+



SERVICE POINTS

36+

SERVICES PROVIDED:



Air Freight

Charters, Consolidations,
Express shipments



Customs & Brokerage

Import / Export / Transit
Clearance



Project Logistics

Dangerous cargo handling,
Heavy lifting, EPC contracting



Sea Freight

FCL and LCL services,
Project Cargos, Breakbulk



Rail Freight

Block train operations, Bulk cargo
handling, FCL and LCL services



Road Freight

Cross-border trucking, Distribution,
Bonded / Non-bonded trucking



Warehousing & Distribution

Cargo distribution by road, rail
and air, 3PL

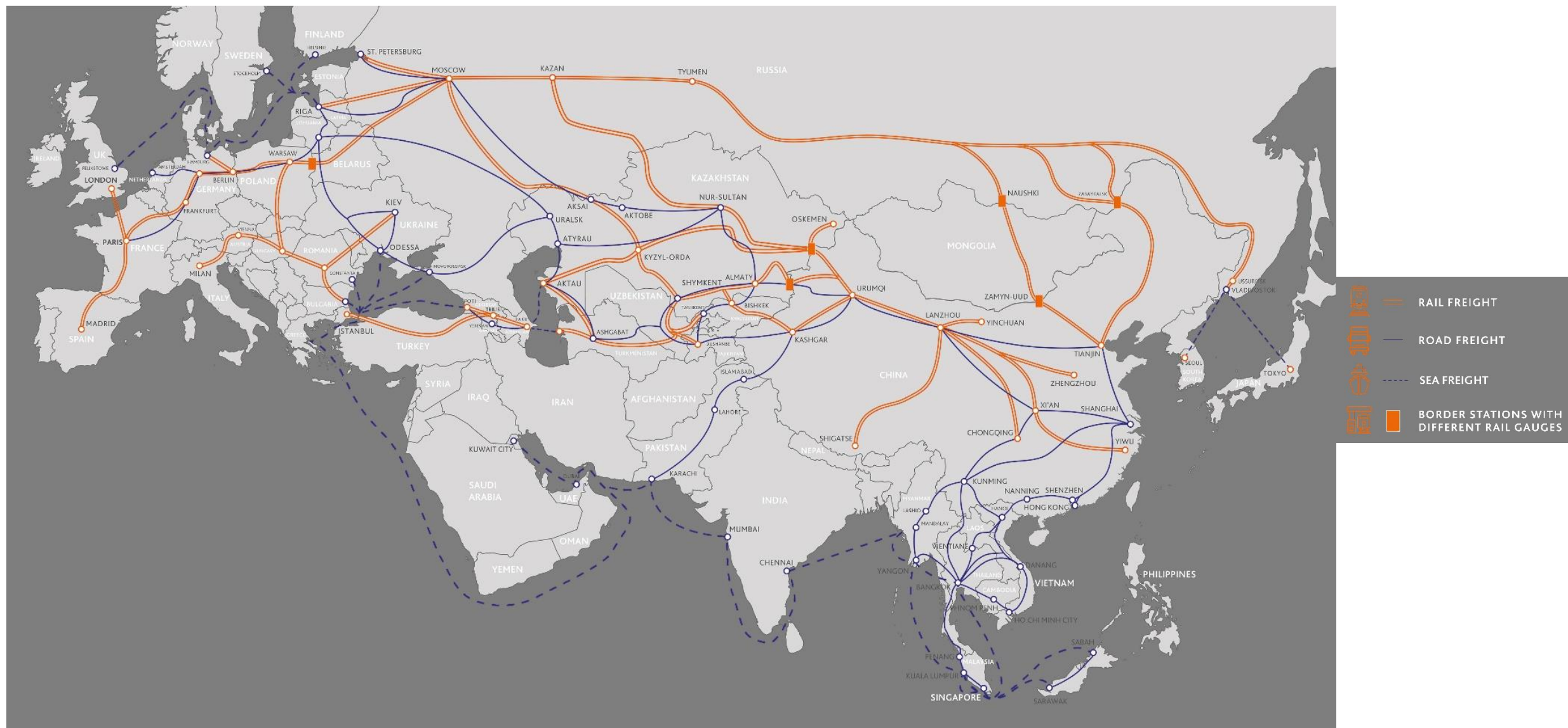


Removals & Relocation

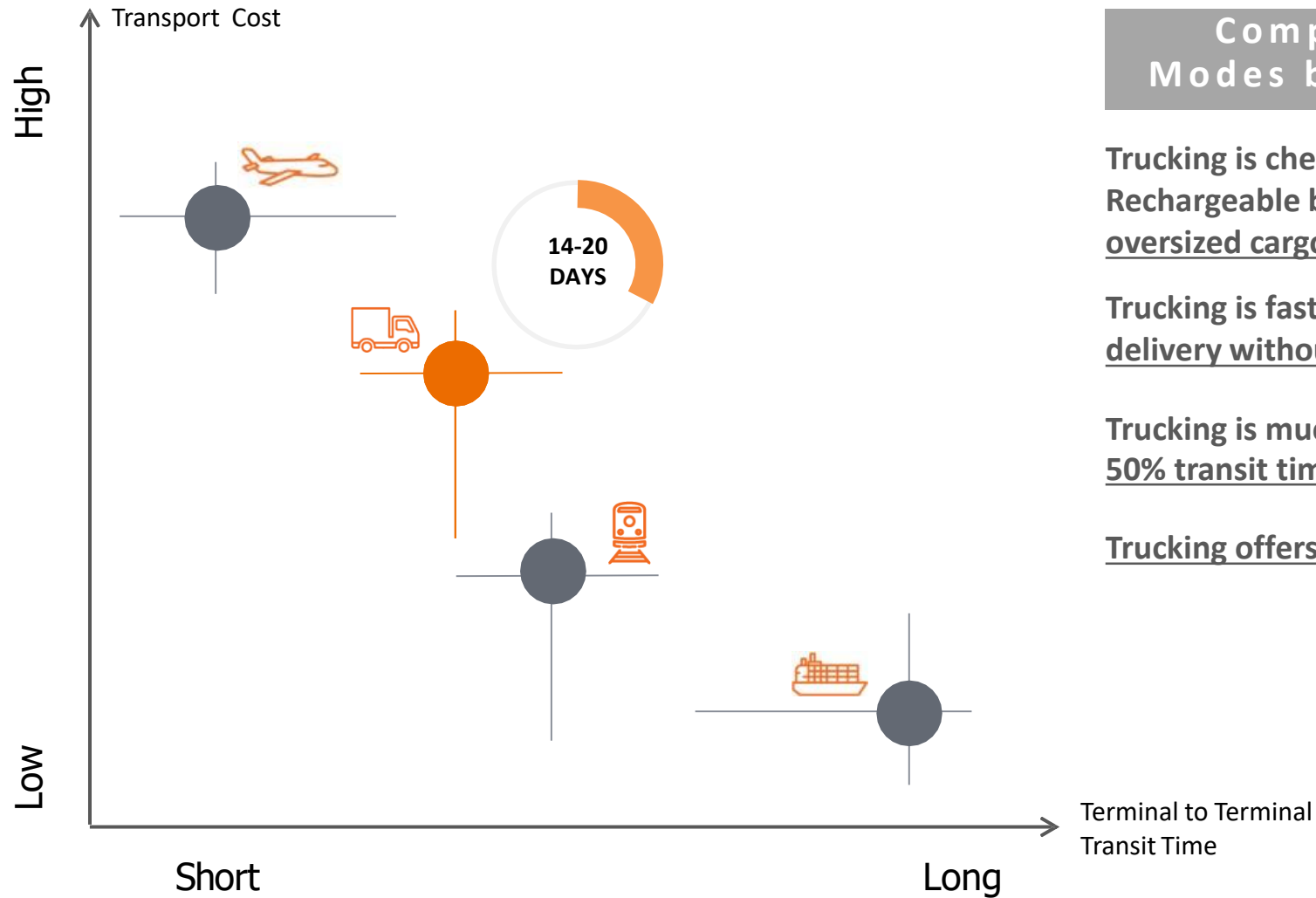
Household goods, Pets, Art,
Office and Auto Moving Service

KLN

GLOBALINK
LOGISTICS







Comparison of Transportation Modes between China-Europe-China

Trucking is cheaper than air freight.

Rechargeable batteries, chemicals, dangerous goods and oversized cargo is acceptable by road transport

Trucking is faster than rail freight and enables Door-Door delivery without extra handling at ports and terminals

Trucking is much faster than ocean freight, saving up to 50% transit time for Door-Door delivery

Trucking offers real time GPS monitoring and tracing



TIR Convention “International Road Transport Union (IRU)”

The Customs Convention on the International Transport of Goods under Cover of TIR Carnets (TIR Convention, 1975) is one of the most successful international transport conventions and is so far the only universal Customs transit system in existence. To date, it has 76 Contracting Parties, including the European Union, China and The CIS states.

Globalink is one of the transport operators authorized to use the TIR system.

TIR Carnet Benefits:

Under the TIR procedure, goods transported between member countries by authorized TIR carnet holders are not subject to customs control at intermediate borders and can travel directly from point A to point B, provided all the seals are intact and the documents are in order. For instance, the goods are inspected by the departure and the destination countries' customs offices.

With the TIR carnet, no importation/exportation taxes must be paid at transit customs (provided that the vehicle does not deliver any goods to the intermediate countries along the route).

GLOBALINK IS AN AUTHORIZED BONDED CARREIR.

GLOBALINK OFFERS COMPREHENSIVE DOOR TO DOOR CARGO INSURANCE

Erlianhot CN - Zamyn-Uud MN
Manzhouli CN - Zabaykalsk RU

China - Russia - Europe

Khorgos CN - Nur Joly KZ
Alashankoy CN - Dostyk KZ
Jeminay CN - Maikapchagai KZ
Torugart CN / Torugart KG
Karasu CN / Kulma TJ

China - Central Asia - Caspian Sea - Black Sea
China - Central Asia – Russia – Baltics – Europe

China - Central Asia – Russia – Poland - Europe

Activities at border:



- Customs clearance / Transit customs
- Document submission / Control
- Trans-loading (in case of changing trailers)
- Customs/Border inspection (if required)

Authorized DG cargo border points since July 2019:



- Alashankoy
- Jeminay
- Torugart





REEFER Trailers -25°C +25°C

Trailers with two or more chambers with different temperature settings



GPS - Temperature monitoring with real-time track & trace



DG licensee (except Class 1, 7)

ADR licensee in EU



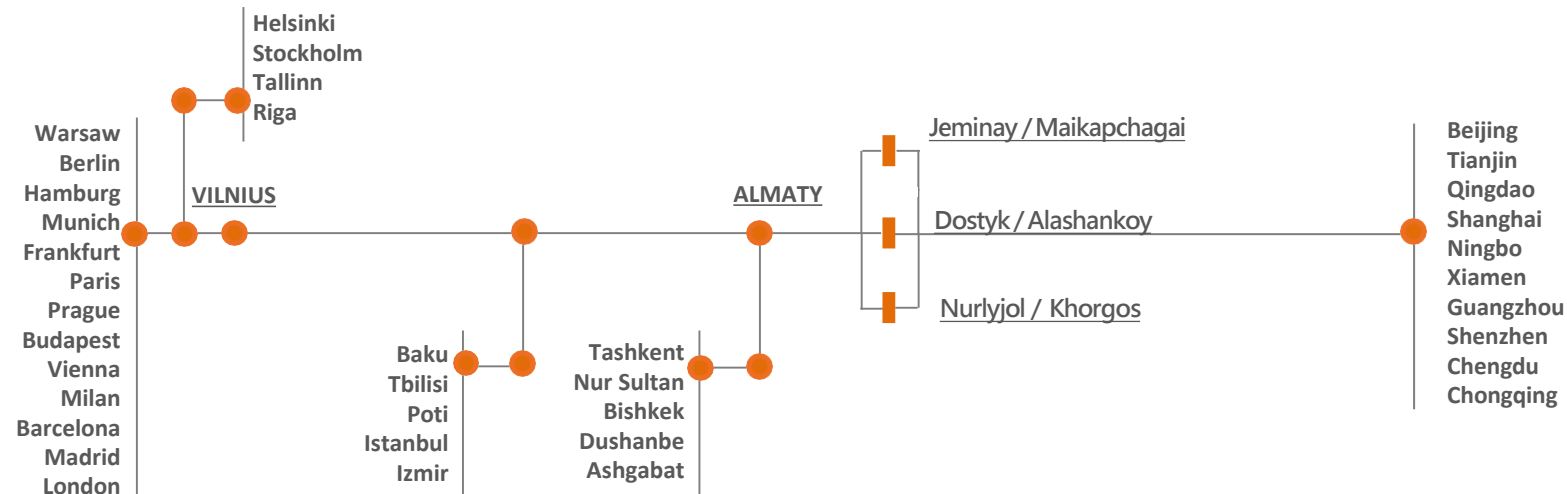
Container, tilt & box type trailers with electronic locks



Flexible border gateway

CN/RU - CN/MN - CN/KZ multiple solutions

European distribution hub in Riga / Vilnius



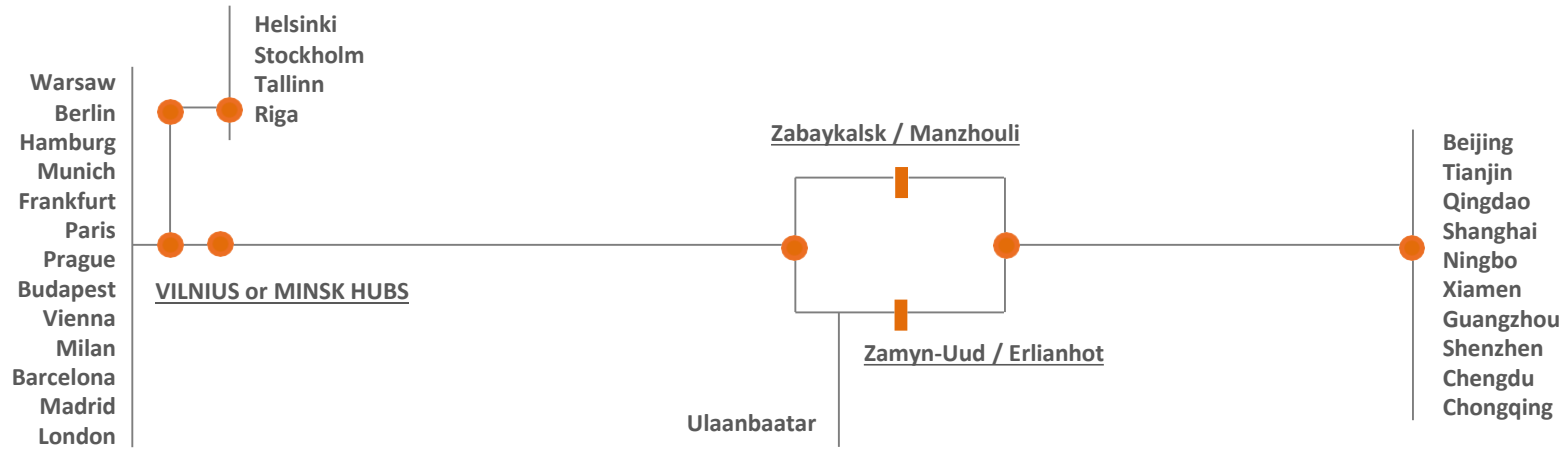
HUB in VILNIUS

- Customs formalities at hub instead of the border)
- T1 issued to any EU destinations
- 1-day transit during week-days
- 2-days transit during weekends
- 1-4 days T/T to/from all EU origins/destinations

GATEWAY in KHORGOS

- Export customs China
- Customs transit KZ/RU/BY
- 1-3 days transit

- ☐ FTL SERVICE BETWEEN CHINA – The CIS – EUROPE
- ☐ FTL & LTL TRUCK LOAD & PART LOAD SERVICES BETWEEN EUROPE – The CIS
- ☐ FTL SERVICES BETWEEN CHINA – CENTRAL ASIA – CAUCASUS – TURKEY



GATEWAY in Erlianhot

- Export customs formalities on the China side of the border
- Transit customs formalities MN/RU/BY
- 1-2 days border transit

Certified trucks / Qualified drivers

GPS device with door-open alert function and real-time track & trace

Minimum trans-loading and self-controlled trans-loading hub (if required)

Tailor-made loading plans, lashing and cargo fixing

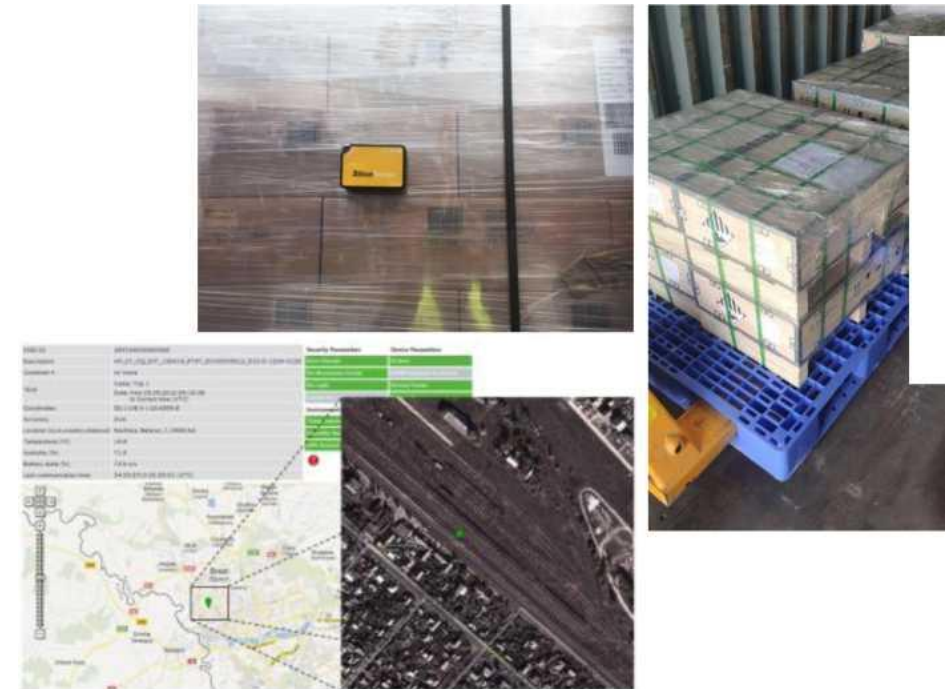
24/7 Security alerts and rapid response

Door to Door Cargo insurance (recommended)

Convoy for high-valued cargo (if needed)

Surveying, pre and post shipment inspection (if required)

Armed security (if needed)



Shipper:

- MSDS / HS code
- Certification for safe transport of chemical and DG cargo
- Booking order
- Packing list
- Commercial invoice
- Export customs declaration
- Borders customs record



Consignee:

- Sign of the Europe T1 transfer application
- Packing list
- Commercial Invoice
- Europe customs clearance code and address
- Proof of delivery

Road Waybill:



- TIR Carnet (if needed)
- CMR
- Forwarder Bills of Lading



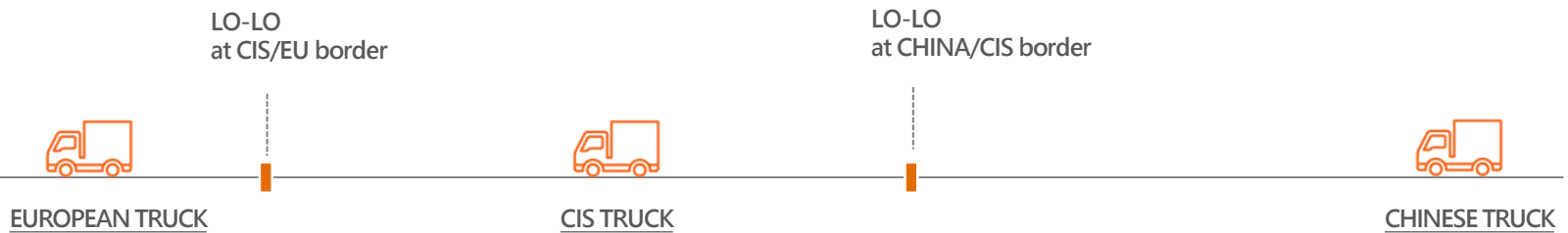
Trans-loading +
Trans-loading



Trans-loading +
Direct



Direct
by Container





PROFILE

DUBAI HQ, Building A5, Office 107 & 108, DWC South Business Park, Dubai, UAE
T +971 4 8813970 | E dubai@globalinklogistics.com

ALMATY HQ, 52, Kabanbai Batyr Street, 050010 Almaty, Kazakhstan
T +7 727 2588880 | E sales@globalinklogistics.com



NAME	POSITION	CONTACT DETAILS
Aftab Ahmed	Group General Manager, Corporate	a.ahmed@globalinklogistics.com
Dmitrijs Jelutins	Regional General Manager, Baltic States	d.jelutins@globalinklogistics.com
Ildus Bariev	General Manager, Projects Rail & Ocean	i.bariev@globalinklogistics.com
Vasily Dovzhenko	General Manager, Air Freight	v.dovzhenko@globalinklogistics.com
Karamat Bhat	General Manager, Road Freight	k.bhat@globalinklogistics.com
Marina Kazanjiyan	Senior Manager, China/Europe Road Freight	m.kazanjiyan@globalinklogistics.com



WE GO FURTHER FOR YOU

VALUE CREATION
OPENNESS
INTEGRITY
COMMITMENT
EXCELLENCE

