



GLOBALINK
LOGISTICS

45 FT REFRIGERATED RAILWAY CONTAINER

January 2024



EURASIA FOCUSED
CHINA SPECIALIST
GLOBAL NETWORK



FOUNDED IN 1994



COUNTRIES

16



TRUCKS

250+



EMPLOYEES

1500+



SERVICE POINTS

36+

SERVICES PROVIDED:



Air Freight

Charters, Consolidations,
Express shipments



Customs & Brokerage

Import / Export / Transit
Clearance



Project Logistics

Dangerous cargo handling,
Heavy lifting, EPC contracting



Sea Freight

FCL and LCL services,
Project Cargos, Breakbulk



Rail Freight

Block train operations, Bulk cargo
handling, FCL and LCL services



Road Freight

Cross-border trucking, Distribution,
Bonded / Non-bonded trucking



Warehousing & Distribution

Cargo distribution by road, rail
and air, 3PL



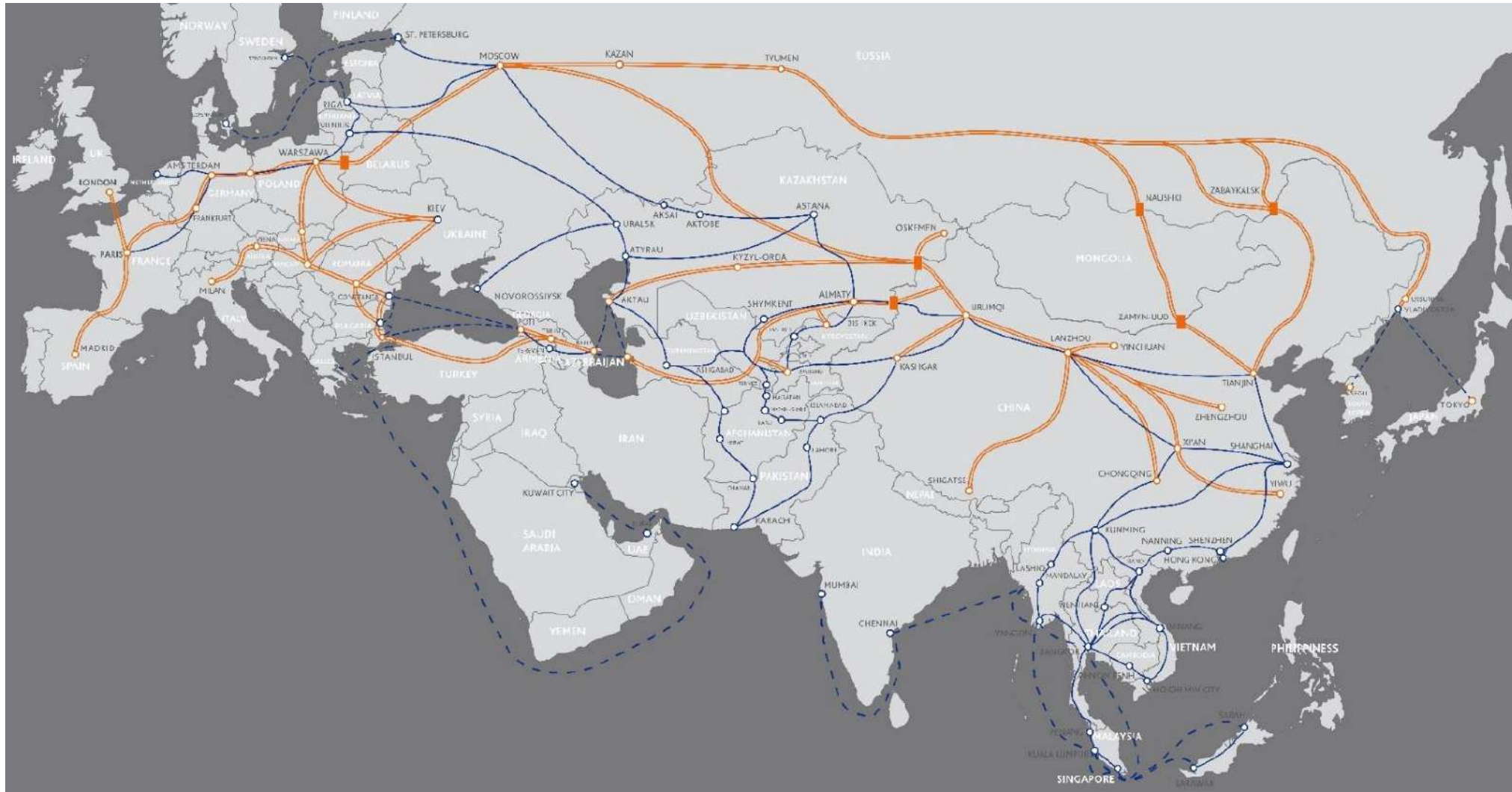
Removals & Relocation

Household goods, Pets, Art,
Office and Auto Moving Service

OUR EURASIAN TRANSPORT NETWORK



GLOBALINK
LOGISTICS



- RAIL FREIGHT
- ROAD FREIGHT
- SEA FREIGHT
- BORDER STATIONS WITH DIFFERENT RAIL GAUGES

MAIN TECHNICAL PARAMETERS OF 45FT REFRIGERATED RAILWAY CONTAINER



- External dimensions: 13716mm×2438mm×2896mm
- Internal dimensions: 12716mm×2294mm×2554mm
- The maximum gross weight: 34000kg
- The dead weight (maintenance state): 6800—7180kg
- Internal volume: 74.5m³
- Fuel tank capacity: 470/543L, the min duration is about 240 hours
- Charging voltage: 380V
- Temperature range in the container: -29°C ~ +27°C
- Operating ambient temperature range: -40°C ~ 80°C
- Refrigerant adopts R404a
- Foaming agent uses polyurethane materials
- Air tightness (M3/hr) ≤8.5
- Heat leakage rate (KCAL/hr.°C) ≤41.3
- Three laterals is the maximum seacking of heavy containers
- With automatic monitoring, automatic control, two-way communication and other intelligent functions



THE INTRODUCTION OF THE CABINET APPEARANCE



GLOBALINK
LOGISTICS



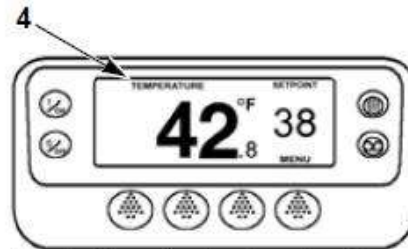
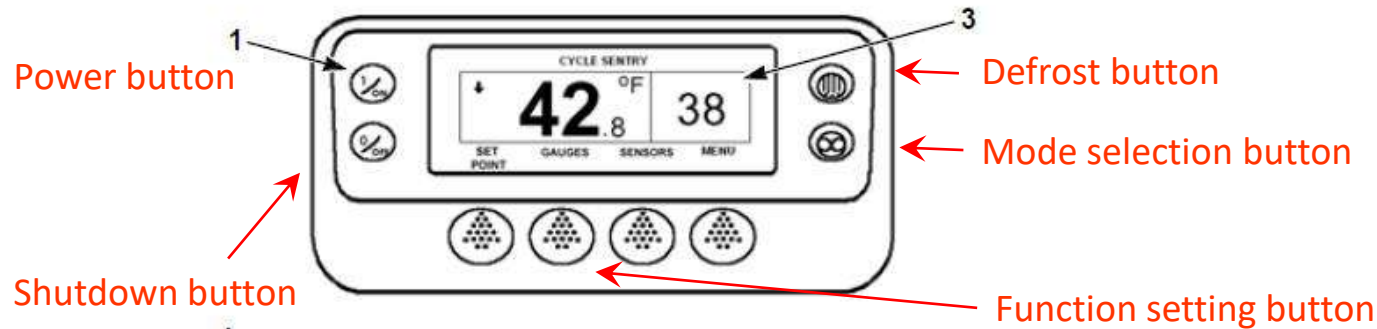
THE INTRODUCTION OF THE CABINET APPEARANCE



GLOBALINK
LOGISTICS



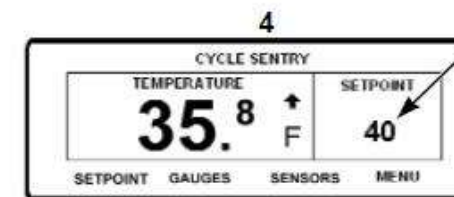
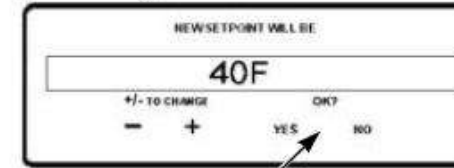
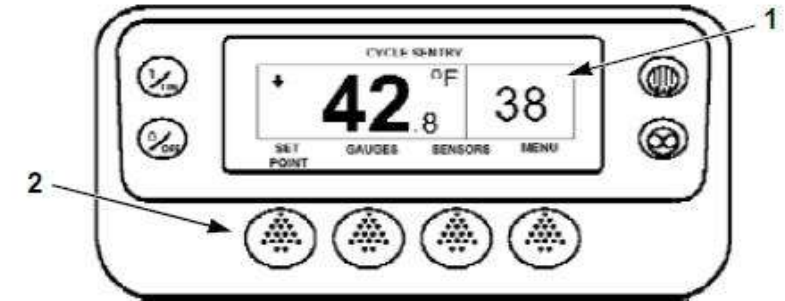
THE OPERATION OF THE REFRIGERATOR



1. Press the start button
2. The screen will display a series of startup information
3. When the unit is running, the standard display interface will display the set point and warehouse temperature

4. After half a minute, the standard display interface switches to the default "temperature observation mode". The interface displays the set point and warehouse temperature in large fonts.

The Cold King Refrigerator: Boot and operation page

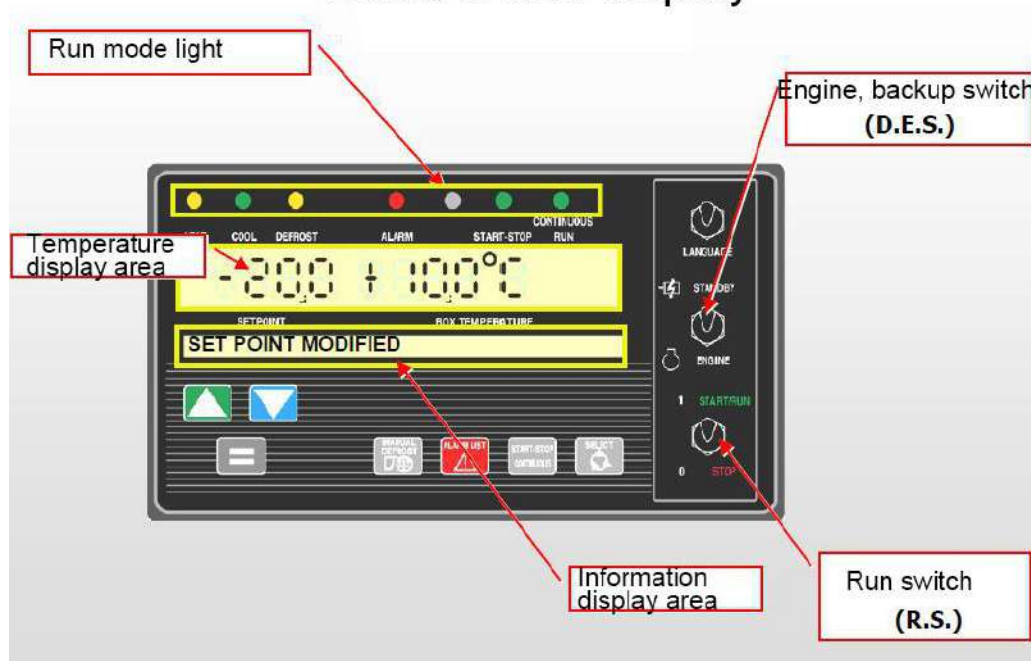


1. Return to the standard display interface.
2. Press the set point key in the standard display interface.
3. Press + or - to change the set point
4. Press the YES or NO button accordingly.
5. According to the change of the set point, the new set point is displayed in the standard display interface

Note: For more detailed information, please refer to the operation chapter of the appropriate unit operation

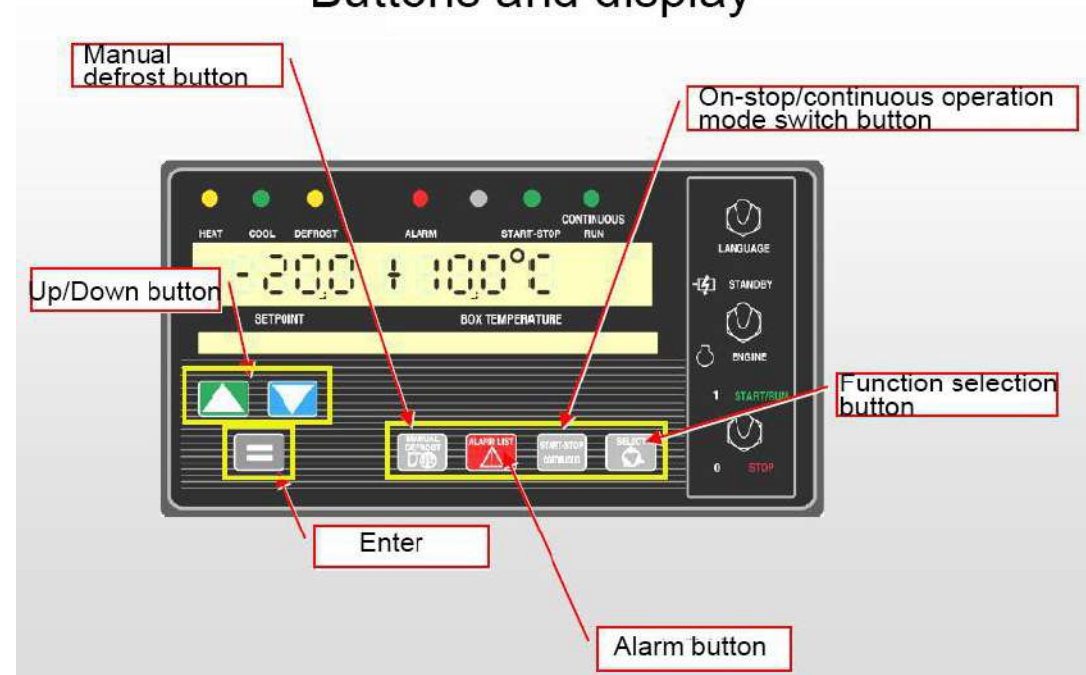
The Cold King Refrigerator: Set temperature

Buttons and display



The refrigerator Carrier

Buttons and display



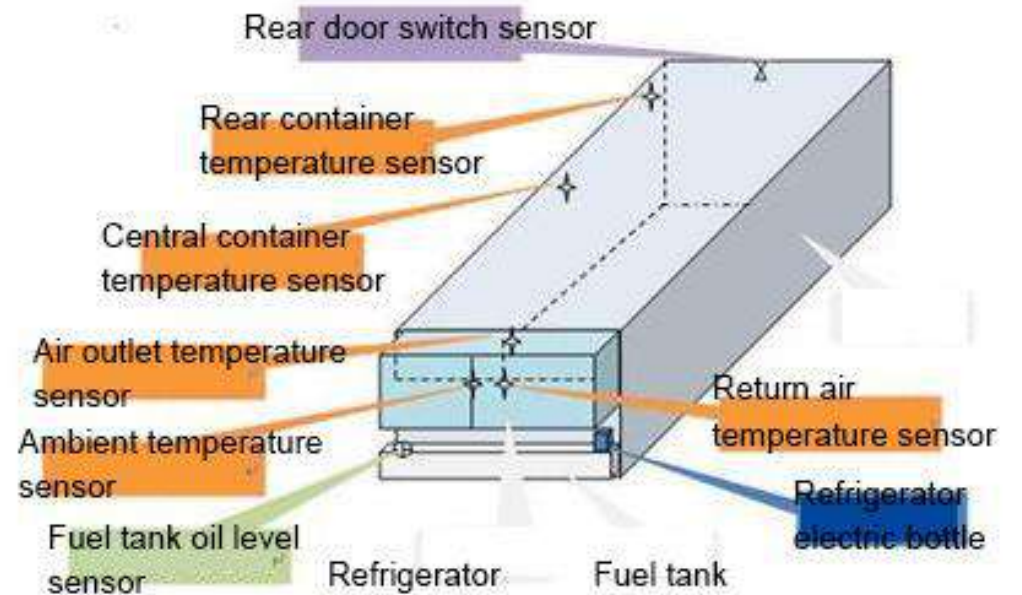
The refrigerator Carrier

- The refrigerator has intelligent functions such as automatic monitoring, automatic control, and two-way communication.
- Position positioning is achieved through GPS, and then through the GPRS two-way communication function, the position, temperature, cold machine status and other information collected from the refrigerator are uploaded to the background information system, and users and monitoring managers can conduct real-time positioning and query through the Internet. Historical track query, remote control and other functions.
- At present, the refrigeration unit realizes the functions of remotely adjusting the temperature in the container, remotely clearing fault codes, and remotely turning on and off the machine.

Common operations of the refrigerator:

- turn on
- set the temperature
- manual defrost
- check before driving
- switch the refrigerator operating mode
- query the running time
- clear the alarm, etc.

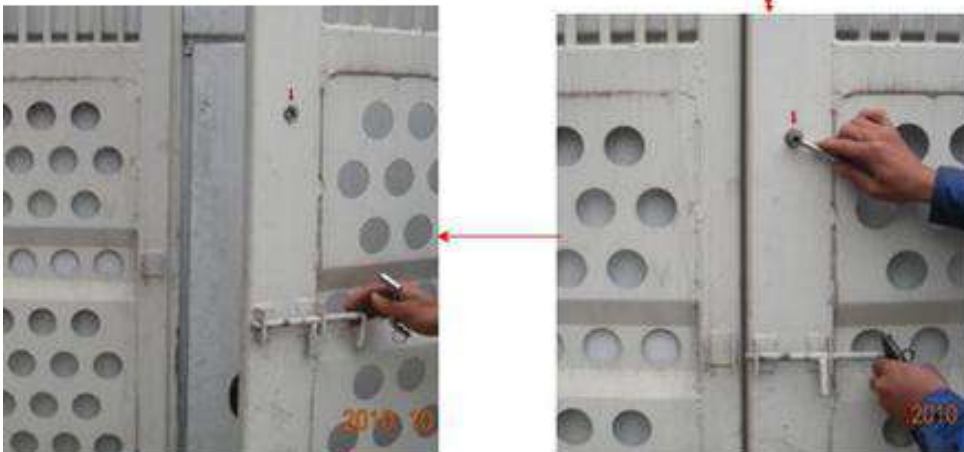
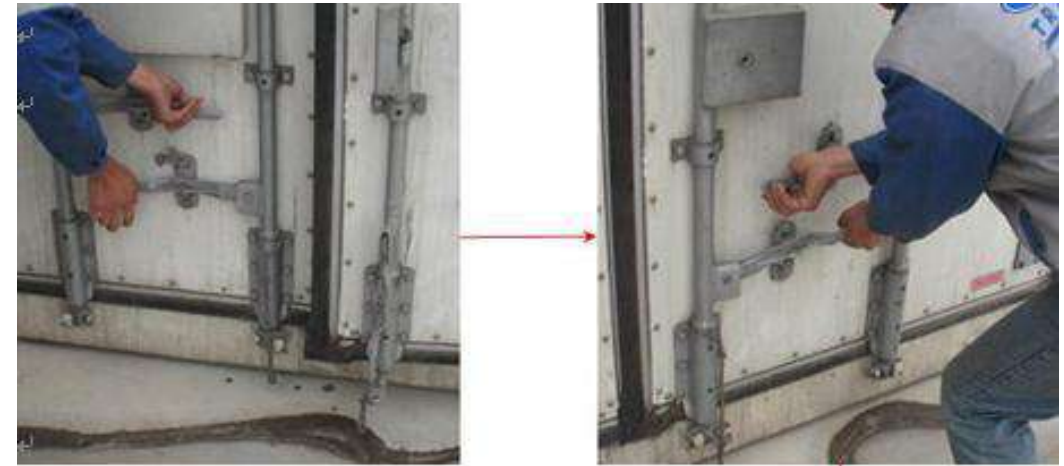
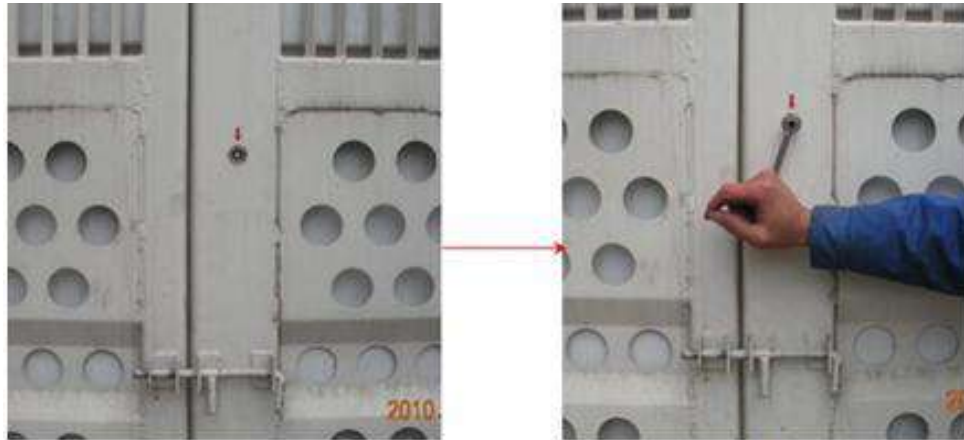
Please refer to the operating manual for specific operations!



- ⊕ Fuel tank oil level sensor
- ✦ Temperature Sensor
- ⊞ Battery (the detection sensor is inside the device)
- ✕ Door switch sensor
- The engine status, refrigerator working mode, preset temperature control points, and engine operating hours collected by the system come from the refrigerator control system

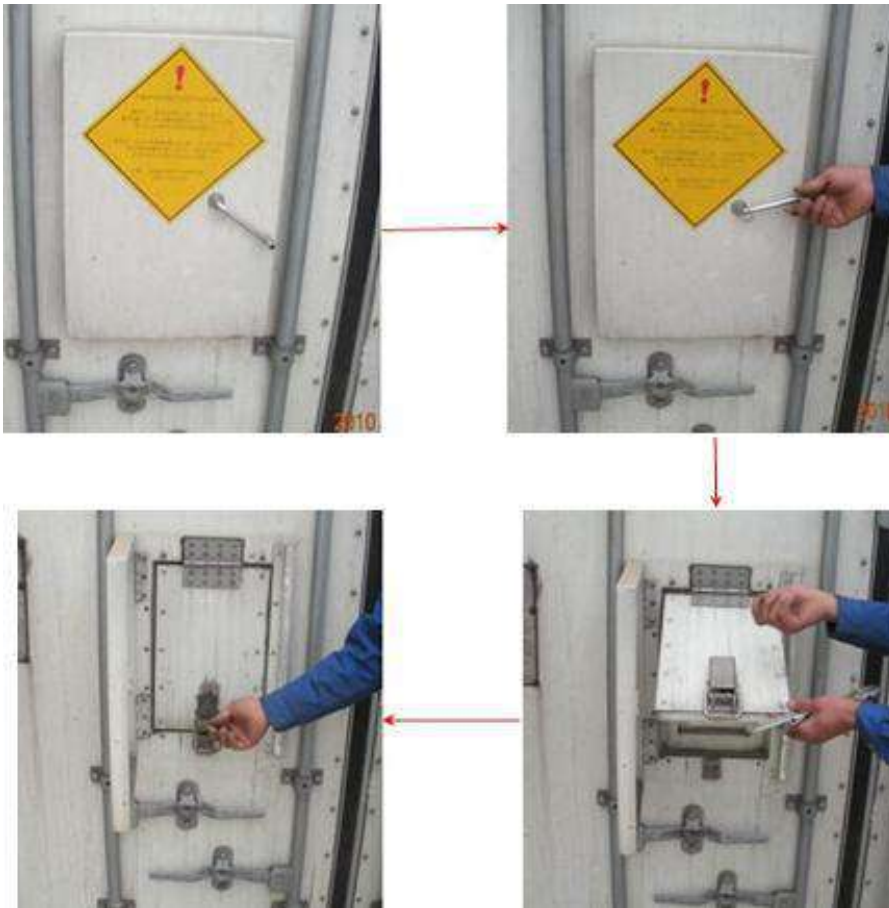
The schematic diagram of refrigerator sensor

THE OPERATION OF THE REFRIGERATOR



The operation of the front doors of the protective frame

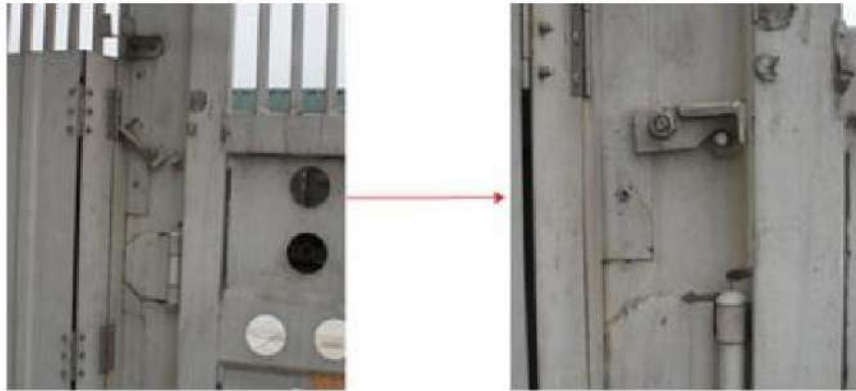
The operation of the rear doors



The operation of ventilators



The operation of the small side doors of the protective frame



Support operation process when the front door is opened



The operation of the fuel tank cap

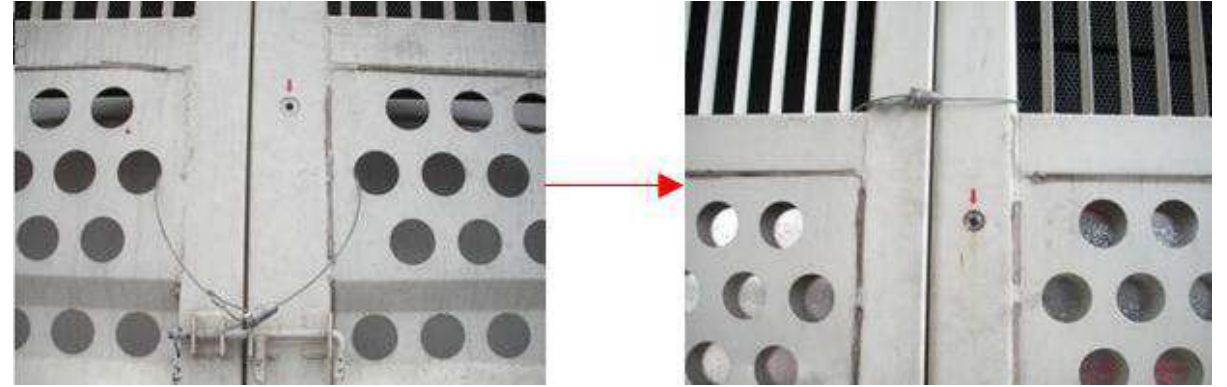
MATTERS NEEDING ATTENTION



T-shaped floor



Drain hole



Note:

Check the sanitation in the container before shipment, keep the T-shaped floor groove and drain hole clean, ensure that there is no impurities, and avoid affecting the normal circulation of air-conditioning!

Note:

In order to ensure the safe transportation of the refrigerated railway container, in addition to locking the front door lock box of the refrigerator protection frame and inserting the door bolt as required, it is also necessary to bind with a reinforcement lock.



Note: When loading cargo, in order not to affect the air circulation in the container, a certain amount of air circulation space must be left. Therefore, the cargo loading height cannot exceed the red line of the height limit in the container; the distance between the red line of the tail of the T-shaped floor and the door end is about 150mm , Just to the edge of the T-shaped floor



Cooling cargo: For different types of goods, according to the technical requirements of the "Fresh Regulations", set up different loading and reinforcement plans, such as fruits, vegetables, etc., which need to be analyzed in detail, combined with seasons, the technical status of the refrigerated container, etc., to formulate loading reinforcement Program.

THE PROBATIONAL SITUATION



With the strong support of the leaders of the Ministry of Railways and the relevant departments of China Railway Containers, and with the joint efforts of all the company's colleagues, the trial operation has made phased progress. We have cooperated with more than ten customers, including Sanquan, Missing, Yili, Mengniu, General Mills and Henan Dayong, which are among the best in the domestic food industry. The trial products include quick-frozen rice noodles, frozen meat, ice cream, fruits, etc.



Sugar oranges



Xinjiang grapes



General Mills



Ice cream

CONTACT PROFILE



PROFILE

DUBAI HQ, Building A5, Office 107 & 108, DWC South Business Park, Dubai, UAE
T +971 4 8813970 | E dubai@globalinklogistics.com

ALMATY HQ, 52, Kabanbai Batyr Street, 050010 Almaty, Kazakhstan
T +7 727 2588880 | E sales@globalinklogistics.com



NAME	POSITION	CONTACT DETAILS
Siddique Khan	CEO	s.khan@globalinklogistics.com
Aftab Ahmed	Group General Manager Corporate	a.ahmed@globalinklogistics.com
Vasily Dovzhenko	General Manager, Airfreight	v.dovzhenko@globalinklogistics.com
Ildus Bariev	General Manager, Projects Rail & Ocean	i.bariev@globalinklogistics.com
Karamat Bhat	General Manager, Road Freight	k.bhat@globalinklogistics.com
Dmitrijs Jelutins	Regional General Manager, Baltic States	d.jelutins@globalinklogistics.com
Pasha Karim	Regional General Manager, Sales	p.karim@globalinklogistics.com



THANK YOU

VALUE CREATION
OPENNESS
INTEGRITY
COMMITMENT
EXCELLENCE

