

REMOVALS & RELOCATION SERVICE

January 2024





FOUNDED IN 1994



COUNTRIES

16



TRUCKS

250+



EMPLOYEES

1500+



SERVICE POINTS

36+

SERVICES PROVIDED:



Air Freight

Charters, Consolidations,
Express shipments



Customs & Brokerage

Import / Export / Transit
Clearance



Project Logistics

Dangerous cargo handling,
Heavy lifting, EPC contracting



Sea Freight

FCL and LCL services,
Project Cargos, Breakbulk



Rail Freight

Block train operations, Bulk cargo
handling, FCL and LCL services



Road Freight

Cross-border trucking, Distribution,
Bonded / Non-bonded trucking



Warehousing & Distribution

Cargo distribution by road, rail
and air, 3PL



Removals & Relocation

Household goods, Pets, Art,
Office and Auto Moving Service

A detailed map of the Silk Road routes, showing the historical trade paths across Eurasia. The map includes major cities and regions such as London, Paris, Rome, Istanbul, Cairo, Baghdad, Samarkand, Bishkek, Almaty, Urumqi, Lanzhou, Beijing, Shanghai, and Singapore. The routes are color-coded: orange lines represent the main Silk Road routes, while blue lines represent secondary or regional routes. The map also shows the Mediterranean Sea, the Red Sea, and the Indian Ocean.

Globalink is a single source for move management services for international moving companies, van lines and corporate clients. Whether it's household goods, personal belongings, family pets or automobiles, we have first-class resources and expertise to plan and coordinate all aspects of move-management services.

MOVE MANAGEMENT – PROCESS

An experienced move coordinator supervises every phase of corporate relocation. The move coordinator assures that standard operating procedures and services – starting from pre-move planning through final delivery and invoicing – strictly comply with your company's policies. Our assigned move coordinator will perform a pre-move consultation, which is an in-depth needs analysis to identify the specific requirements, expectations and concerns of the relocating family.

We will arrange an in-home pre-move survey of the household goods to be shipped, to identify special packing, crating, handling and shipping based on our pre-move survey results, and the move coordinator will calculate the estimated cost of the move. Once our pricing estimate is approved, our move coordinator will update your employee/customer on the entire moving process, from the packing schedule, insurance, customs clearance to the expected date of delivery.

Our move coordinator will stay in close contact with the transferee throughout the moving process to make sure they receive proper consultation, correct information and sound advice on any question or concern that they may have. Globalink move coordinators are trained by FIDI Academy and empowered to respond quickly, providing the necessary information to your customer/employee.



OUR MOVE MANAGEMENT SERVICES INCLUDE:

- Pre-move consultation
- Pre-move survey
- Quality control checks
- Packing and crating
- Heavy-goods handling
- On-site move supervision
- Insurance and risk consultancy
- Air, Sea and Land transportation
- Real-time GPS tracking
- Removal of moving debris

Moving abroad can be a challenging task. Our moving specialists can assist you with everything from a pre-move survey, move-planning, pricing estimates, through to customs clearance advisory and helping you select the most effective transportation method for moving your belongings to another country.

The moving specialists at Globalink will help to make a daunting moving process a lot less stressful for you and your family. We manage thousands of international moves each year, so we have mastered the process and able to offer a customized international moving plan to fit your budget and needs.

Globalink has a far-reaching worldwide network that includes a variety of resources for worldwide door-to-door moving service. Our worldwide moving resources include cargo insurance, pet relocation, moving of automobiles, storage, a move-tracking system to let you know where your belongings are every step of the way, help with customs clearance and much more. With more than 25 years of experience in worldwide moving services, you can be sure that Globalink has what it takes to make your international move go as smoothly as it possibly can.



OUR INTERNATIONAL MOVING SERVICES INCLUDE:

- Pre-move planning, survey and assessment
- Packing, crating and handling of household goods
- Special packing, crating and handling of valuables
- Assembly & disassembly of complicated furniture
- Piano and heavy item packing and crating
- Transportation by sea, road, rail and air
- Worldwide door-to-door delivery service
- Worldwide pet relocation service
- Worldwide auto transportation
- Office moving and relocation
- Cargo insurance

Relocation is stressful, even in the most favorable circumstances. Your employees/customers are not only concerned with settling into a new location, office, co-workers, and job duties, but some may also have the added responsibility to help their families settle in.

Relocating an Employee abroad is a chance to stand out as an Employer. It's an opportunity to show your employees just how much you value them. By helping your employees and their families relocate and settle in happily, you help them focus on their work so that they fit into their new location and become productive more quickly.

Globalink, as a premier removal and relocation service provider, is best known for providing highly personalized services on a global scale. With support from our team of seasoned removal and relocation professionals, your employees and their families will cope far better with all the stress and strain of relocating. The only thing that matters when it comes to executive relocation is getting the job done right. When you choose Globalink to support your relocating employees and their families, you increase the likelihood of a successful transfer and significantly reduce the risk of incurring substantial financial losses that arise when a transfer fails.



OUR CORPORATE RELOCATIONS SERVICES INCLUDE:

- House hunting and Tenancy management
- Settling-in and mentoring
- School search
- Cross-cultural training
- Language courses
- City orientation tour
- Welcome package
- Spouse carrier assistance
- Car and furniture – rental and purchasing assistance
- Immigration services
- Departure services
- 24/7 helpline and emergency support system
- Handyman service

As specialists in International Moving and Relocation Services, we are passionate about your pet's safety as well as your peace of mind! We clearly understand that Pet Relocation is one of the most crucial aspects of your family move. Whether your pet is moving across the country or around the world, our team of certified specialists manage all the door-to-door facets of your pet's relocation with the utmost care. As a member of IPATA (International Pet and Animal Transportation Association), our "IPATA Accredited Live Animal Transportation" specialists ensure hassle-free, worldwide, pet and animal moving services, including veterinary services.

OUR PET AND ANIMAL TRANSPORTATION SERVICES INCLUDE:

- Pre-arranging all necessary flights, ensuring direct connections when possible
- Making sure all required vaccination shots are current and all paperwork is in place
- Confirming all international requirements, including import permits at the destination, are met
- 24/7 transfer of your pet from your home to the Airport
- Pet Hotel services at origin and destination, where such services are available
- Meeting your pet at the destination airport and arranging a smooth transfer to your home
- Providing assembled travel kennels according to the weight and size of your pet
- Airport Veterinary and Customs Clearing services





FIDI ACCREDITED
INTERNATIONAL
MOVER

Federacion Internationale des Demenageurs Internationaux

600+ members worldwide.

[Certified locations: Almaty, Nur-Sultan, Aktau, Atyrau]



Worldwide ERC

2900+ members



International Association of Movers

former HHGFAA

1800+ members worldwide



International Pet and Animal Transportation Association

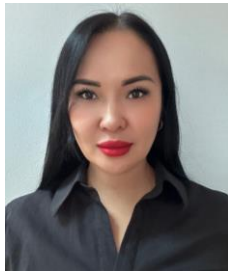
440+ members worldwide



ISO 9001 Quality Management

ISO 45001:2018 Occupational Health and Safety Assessment Series certified

MEET THE TEAM



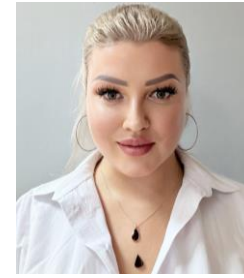
Indira Dzhumasheva
General Manager
+7 727 2588880 ext.222
i.dzhumasheva@globalinklogistics.com



Zarina Yerkebayeva
Manager CIS Division
+7 727 2588880 ext.245
Azerbaijan, Ukraine, Russia
z.yerkebayeva@globalinklogistics.com



Janar Albekova
Senior Move Manager
+7 727 2588880 ext.226
Kazakhstan
j.albekova@globalinklogistics.com



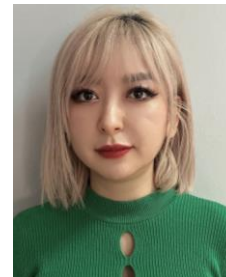
Natalya Gnatchenko
Move Coordinator
+7 727 2588880 ext. 220
Kazakhstan
n.gnatchenko@globalinklogistics.com



Karlygash Baimurzina
Move Coordinator
+7 727 2588880 ext. 225
Kyrgyzstan, Tajikistan, Belarus, Mongolia
k.baimurzina@globalinklogistics.com



Sabina Lee
Move Coordinator
+7 727 2588880 ext. 221
s.lee@globalinklogistics.com



Sabina Saumenova
Move Coordinator
+7 727 2588880 ext. 219
Tajikistan, Turkmenistan, Afghanistan, Latvia
s.saumenova@globalinklogistics.com



Aizhan Abisheva
Move Coordinator
Uzbekistan, Pakistan, Armenia, UAE
+7 727 2588880 ext. 223
a.abisheva@globalinklogistics.com

OUR NETWORK



E kabul@globalinklogistics.com



E yerevan@globalinklogistics.com



E baku@globalinklogistics.com



E tbilisi@globalinklogistics.com



E sales@globalinklogistics.com



E bishkek@globalinklogistics.com



E d.jelutins@globalinklogistics.com



E d.jelutins@globalinklogistics.com

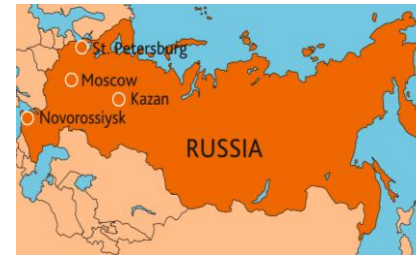
OUR NETWORK



E d.jelutins@globalinklogistics.com



E islamabad@globalinklogistics.com



E moscow@globalinklogistics.com



E dushanbe@globalinklogistics.com



E ashgabat@globalinklogistics.com



E kiev@globalinklogistics.com



E dubai@globalinklogistics.com



E tashkent@globalinklogistics.com

REMOVALS@GLOBALINKLOGISTICS.COM | WWW.GLOBALINKLOGISTICS.COM



THANK YOU

VALUE CREATION
OPENNESS
INTEGRITY
COMMITMENT
EXCELLENCE

