

# GLOBALINK LOGISTICS



## DESTINATION SERVICE TARIFFS AND CUSTOMS INFORMATION 2024

**GLOBALINK**  
LOGISTICS

[sales@globalinklogistics.com](mailto:sales@globalinklogistics.com)

[www.globalinklogistics.com](http://www.globalinklogistics.com)



# CONTENTS

1. INTERNATIONAL MOVE MANAGEMENT AND RELOCATION, PET MOVING SERVICES	
2. REGIONS	3
3. MOVE MANAGEMENT TEAM	4
4. DESTINATION SERVICE RATES AND CUSTOMS INFORMATION	5
Armenia	7
Azerbaijan	9
Afghanistan	11
Georgia	13
Kazakhstan	15
Kyrgyzstan	17
Latvia	19
Lithuania	21
Mongolia	23
Pakistan	25
Russia	27
Tajikistan	29
Turkmenistan	31
Ukraine	33
Uzbekistan	35
GENERAL TERMS AND CONDITIONS	37

---

# REGIONS



**ARMENIA**  
Yerevan, GMT +4  
E [yerevan@globalinklogistics.com](mailto:yerevan@globalinklogistics.com)



**RUSSIA**  
Moscow, St. Petersburg, GMT +3  
E [moscow@globalinklogistics.com](mailto:moscow@globalinklogistics.com)



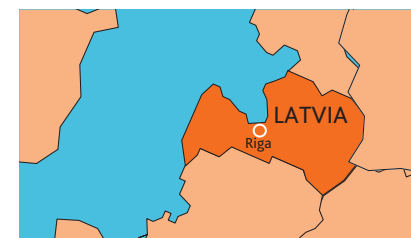
**GEORGIA**  
Tbilisi, Poti, GMT +4  
E [tbilisi@globalinklogistics.com](mailto:tbilisi@globalinklogistics.com)



**TAJIKISTAN**  
Dushanbe, GMT +5  
E [dushanbe@globalinklogistics.com](mailto:dushanbe@globalinklogistics.com)



**TURKMENISTAN**  
Ashgabat, Balkanabat, Turkmenbashi, GMT +5  
E [ashgabad@globalinklogistics.com](mailto:ashgabad@globalinklogistics.com)



**LATVIA**  
Riga, GMT +2  
E [d.jelutins@globalinklogistics.com](mailto:d.jelutins@globalinklogistics.com)



**UAE**  
Dubai, GMT +4  
E [dubai@globalinklogistics.com](mailto:dubai@globalinklogistics.com)



**UKRAINE**  
Kiev, GMT +2  
E [kiev@globalinklogistics.com](mailto:kiev@globalinklogistics.com)



**AZERBAIJAN**  
Baku, GMT +4  
E [baku@globalinklogistics.com](mailto:baku@globalinklogistics.com)



**KYRGYZSTAN**  
Bishkek, GMT +6  
E [bishkek@globalinklogistics.com](mailto:bishkek@globalinklogistics.com)



**UZBEKISTAN**  
Tashkent, GMT +5  
E [tashkent@globalinklogistics.com](mailto:tashkent@globalinklogistics.com)



**KAZAKHSTAN**  
Astana, Almaty, Shymkent, Taraz, Oskemen, Aksai, Atyrau, Aktau, Aktope, Kyzylorda, Karaganda, GMT +5  
E [sales@globalinklogistics.com](mailto:sales@globalinklogistics.com)



**LITHUANIA**  
Vilnius, GMT +2  
E [d.jelutins@globalinklogistics.com](mailto:d.jelutins@globalinklogistics.com)



**PAKISTAN**  
Islamabad, Lahore, Karachi, GMT +5  
E [removals@globalinklogistics.com](mailto:removals@globalinklogistics.com)



**MONGOLIA**  
Ulaanbaatar, GMT +8  
E [u.batmunkh@globalinklogistics.com](mailto:u.batmunkh@globalinklogistics.com)





**Indira Dzhumasheva**

General Manager

Kazakhstan

☎ +7 727 258 88 80 ext. 222

✉ i.dzhumasheva@globalinklogistics.com



**Zarina Yerkebayeva**

CIS Manager

Azerbaijan, Ukraine, Russia

☎ +7 727 258 88 80 ext. 245

✉ z.yerkebayeva@globalinklogistics.com



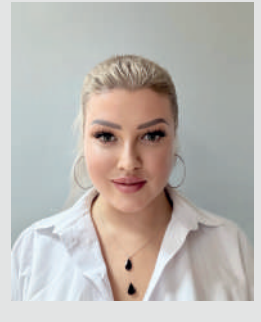
**Janar Albekova**

Senior Move Manager

Kazakhstan

☎ +7 727 258 88 80 ext. 226

✉ j.albekova@globalinklogistics.com



**Nataliya Gnatchenko**

Move Coordinator

Kazakhstan

☎ +7 727 258 88 80 ext. 220

✉ n.gnatchenko@globalinklogistics.com



**Anna Baidalina**

Move Coordinator

Uzbekistan, Armenia,

Pakistan, UAE

☎ +7 727 258 88 80 ext. 223

✉ a.baidalina@globalinklogistics.com



**Karlygash Baimurzina**

Move Coordinator

Tajikistan, Kyrgyzstan, Mongolia, Belarus

☎ +7 727 258 88 80 ext. 225

✉ k.baimurzina@globalinklogistics.com



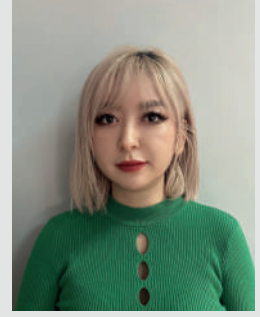
**Darya Lukashenko**

Move Coordinator

Kazakhstan

☎ +7 727 258 88 80 ext. 221

✉ d.lukashenko@globalinklogistics.com



**Sabina Saumenova**

Move Manager

Turkmenistan, Georgia, Afghanistan

☎ +7 727 258 88 80 ext. 219

✉ s.saumenova@globalinklogistics.com

## OUR MOVE MANAGEMENT SERVICES

### International Move

- Waybill
- Supply of necessary packing material
- Pre-move survey
- Wrapping and packing
- Loading into container/truck
- Dismantling of furniture
- Customs clearance
- Documentation and shipping
- Insurance brokerage
- Unloading
- Delivery
- Assembling of furniture
- Disposal of debris and empty boxes

### Services

- Service for overseas transportation, as well as domestic transportation
- Pre-arranging flights
- Making sure paperwork is in place
- Pet hotel services, if required
- Departure and arrival procedures
- Airport veterinary and customs clearance services
- Provision of kennels if required

### Storage Service

- Permanent storage
- Long-term storage (LTS)
- Storage in transit (SIT)
- Record file storage
- Corporate Services
- International moving of household goods and personal effects
- Office move
- Local move

### Performance & Exhibition

- A set of service including package, transportation, customs clearance, and return after performance is provided

- Accompanied School appointments
- Specific information based on assignees' needs
- Registration assistance

### Home search / Lease agreement

- Screening through real estate agencies / providing most appropriate units
- Accompany to selected properties
- Negotiation / Lease agreement
- Utilities set up
- Shopping / Security / Local authorities
- Check-in inspection

### Settling-In Assistance

- Opening bank accounts
- Driving license
- Transfer of utilities / Home keys / Cards / Auto lease or purchase

### Property Management

- Lease termination
- Deposit refund
- Screen and arrange proper subcontractors for maintenance
- Move-in & move-out inspection assistance
- Property claims handling
- Ongoing tenancy management

### Immigration

Assistance with local registration

### Departure assistance

- Closing of utilities
- Bank accounts closure
- Check out inspection assistance

## OUR RELOCATION SERVICES

### Orientation / Preview Trip

- Welcome package
- City orientation tour
- Sample properties
- School search
- Explain expat activities / leisure

### Temporary Accommodation

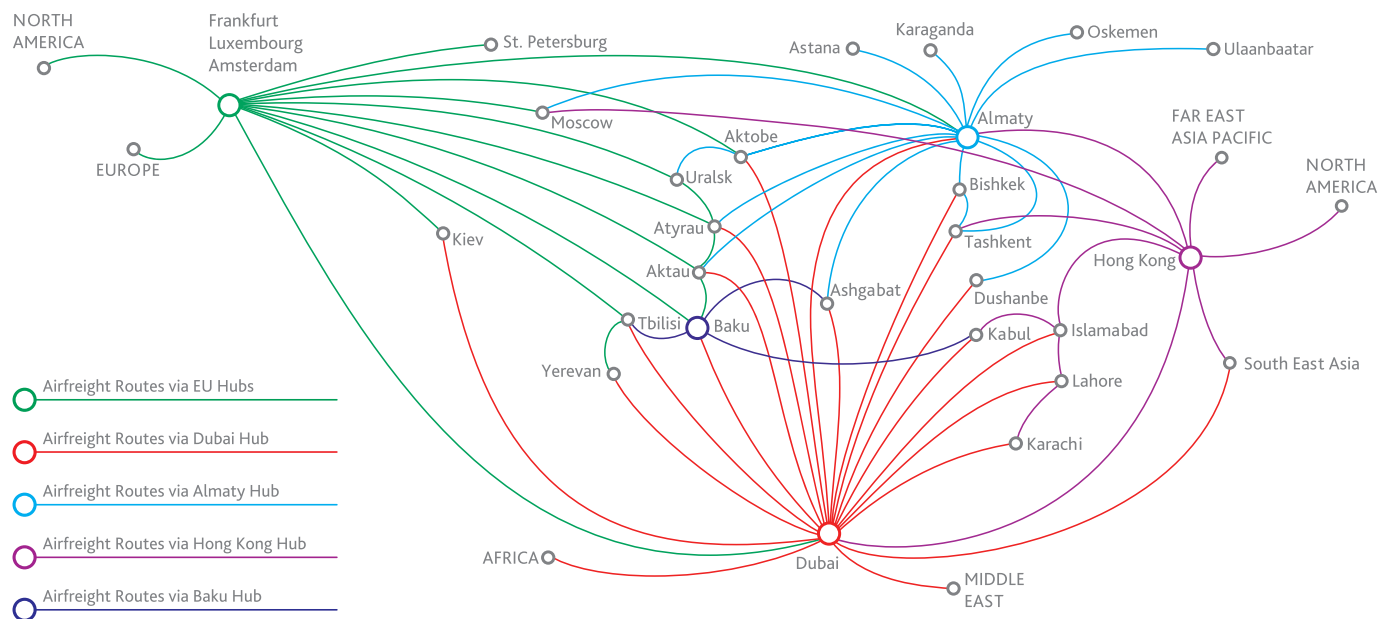
- Residence or hotel search
- Lease agreement negotiation
- Pre check-in inspection



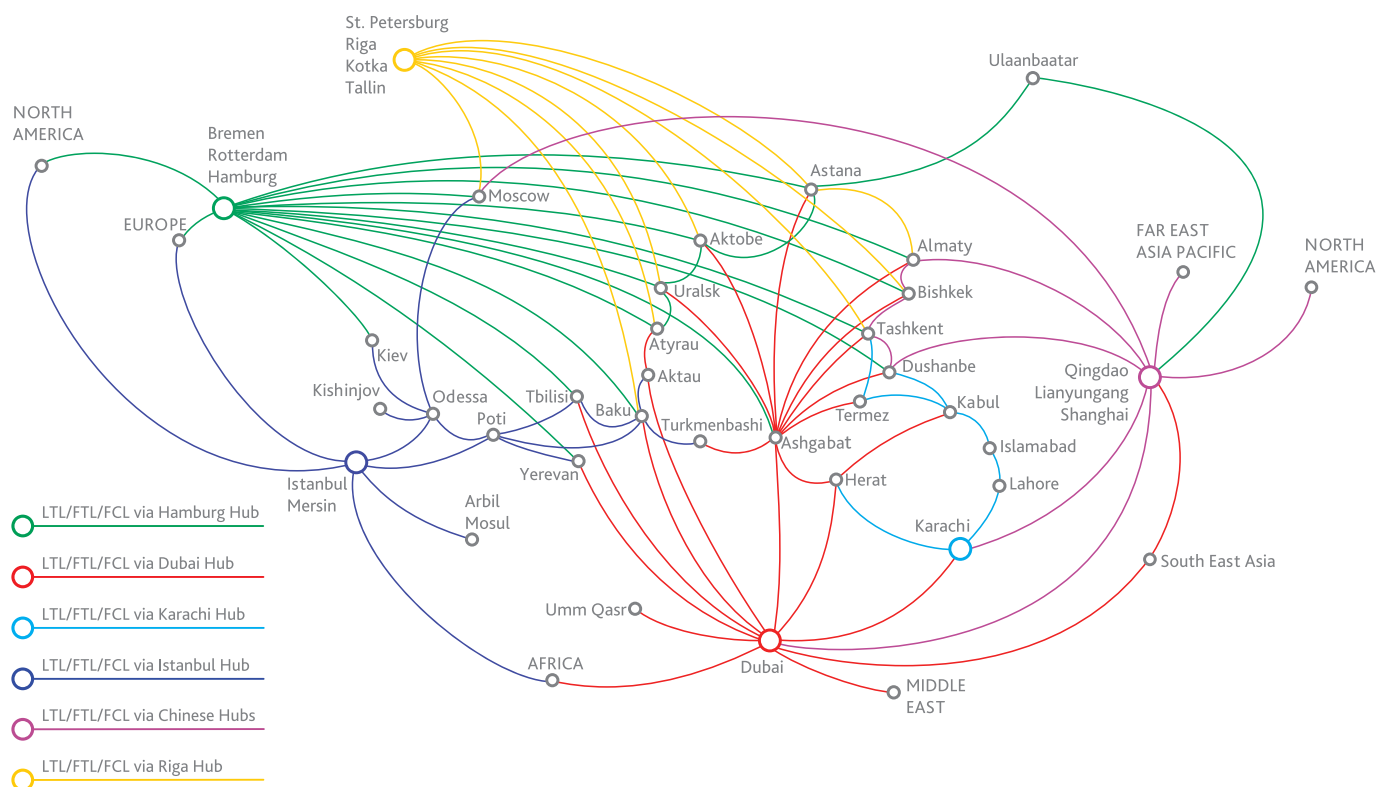
# Complete Transportation & Logistics Solutions

Globalink connects the world's economic centers and major global trade markets like North America, Europe, Middle East, Asia Pacific, SE Asia, Africa and the CIS into a seamless network-effectently, economically and reliably

## AIRFREIGHT NETWORK



## SEA, ROAD & RAIL FREIGHT NETWORK







## USEFUL INFORMATION & CUSTOMS REGULATIONS

### COUNTRY

### ARMENIA

#### DIPLOMATIC SHIPMENT:

- Waybill
- Packing list
- Passport copy
- Residence card
- Copy of diplomatic card
- Power of attorney notarized on company letterhead
- Pro-forma invoice
- Transportation cost confirmation

#### RETURNING CITIZENS SHIPMENT:

- Waybill
- Packing list
- Passport copy
- Power of attorney notarized
- Detailed packing list with values
- Employment confirmation

Import duties in Armenia (diplomats are exempted) 2-4 EUR per kg depends on client's status. Shipments within Customs Union (Russia, Belarus, Kazakhstan, Armenia, Kyrgyzstan) are duty free

#### Documents required for customs clearance of household goods

- Weapons of all kinds
- Pornography
- Narcotics
- Toxic material/ Radioactive material
- Any items made in Turkey
- Wildlife species
- Export of antiques which are of Armenian cultural and historical value.
- Medicine, alcohol

#### IMPORT OF WINE AND SPIRITS:

1 liter per shipment

**NOTE:** Precious jewelry, stones and currency can be imported only as accompanied baggage and must be declared with the customs authorities at the airport at the time of arrival. The declaration will be required for presentation to the customs authorities at the time of departure.

#### Prohibited Items

#### DIPLOMATIC VEHICLE:

- Waybill
- Original technical passport or certificate of title
- Pro-forma invoice
- Non-theft certificate from Interpol

List of documents required for the import of a returning citizen's vehicle is to be provided upon request.

#### Documents required for customs clearance of Motor Vehicles

- Waybill
- Vaccination certificate
- Veterinary certificate
- Pets passport

- Owner passport
- Invoice
- Pet weight and kennel dimensions (net/gross)

#### Pets

**NOTE:** additional documents may be requested after submitting a Pet's passport copy

#### Special requirements in customs regulations

Customs clearance will take approx. 2-3 working days for diplomatic shipments and 7-10 working days for non-diplomatic shipments accordingly. Do not send insurance or any document stating value of goods along with the shipment to avoid payment of heavy import duties. Non-diplomatic containers arriving to Poti port may be subject to 30 day customs clearance and inspection. Additional storage charges may apply.

**ROUTING:** to Armenia

**SURFACE:** via Poti Port, Georgia

**AIR:** via Yerevan, Armenia; Amsterdam Schiphol, The Netherlands, Dubai, UAE and Tbilisi, Georgia

**NOTE:** Globalink offers scheduled air freight, FCL services on the above mentioned routes.

Rates are available upon request. Please send requests to [removals@globalinklogistics.com](mailto:removals@globalinklogistics.com)

# DESTINATION RATE SCHEDULE

REF: GT\_12/24

**Rates for Transit Customs Clearance in Poti Port, Georgia and Transportation ex. Poti Port to Yerevan Terminal, Armenia**

	1x20' Container	Container 1x40' HC	Container 1x40
Transit customs clearance in Poti port and further trucking to Yerevan terminal	\$1750	\$1950	\$1950
Destination services ex. Yerevan terminal to the residence in Yerevan	\$1400	\$ 2200	\$2500

**NOTE:** Please ask for consignment instructions and documentation requirements before sending the shipment in order to avoid any extra storage/demurrage charges.

## SURFACE SHIPMENTS

**FCL SHIPMENTS • Density 6.5lbs**

Rates are quoted in US Dollars per gross hundred pounds (GCWT)	From terminal Yerevan to residence Yerevan							
	min chargeable per Shipment up to 1000 lbs	1001 – 2000 lbs	2001 – 3000 lbs	3001 – 4000 lbs	4001 – 5000 lbs	5001 – 6000 lbs	6001 – 8000 lbs	Over 8001 lbs
	350	45	30	25	25	22	18	18

**VEHICLE**

One vehicle in 1x20' container	
Rates in US Dollars	450

## AIR FREIGHT SHIPMENTS

**AIR SHIPMENTS • Density 6.5lbs**

From airport Yerevan to residence Yerevan							
Rates are quoted in US Dollars per gross hundred pounds (GCWT)	Minimum chargeable per shipment up to 500 lbs	501 - 1000 lbs	1001 – 2000 lbs	2001 – 3000 lbs	3001 – 4000 lbs	4001 – 5000 lbs	Over 5001 lbs
	350	70	40	30	25	25	22

**NOTE:** Please pay attention to general terms and conditions on page 37. Above rates exclude cost of import customs declaration (USD 100)

**NOTE:** Rates are valid till within a 50 kilometers delivery radius





## USEFUL INFORMATION & CUSTOMS REGULATIONS

### COUNTRY

### AZERBAIJAN

#### DIPLOMATS:

- Waybill
- Packing list
- Pro-forma invoice
- Passport copy
- Visa copy
- Diplomatic card copy
- Power of attorney on company letterhead
- Employment confirmation
- Photos of cultural items

#### FOREIGNERS:

- Waybill
- Packing list
- Pro-forma invoice
- Passport copy
- Valid visa copy
- Power of notarized attorney
- Employment confirmation photos of cultural items

All in-bound non-diplomatic shipments are subject to payment of customs duties in case of permanent import regime. Consumables are not allowed for temporary importation.

Returning Azerbaijan citizens are not permitted to import their household goods on temporary import basis and therefore, are liable for payment of full customs duties at 36% of CIF value.

#### RETURNING CITIZENS OF AZERBAIJAN:

- Waybill
- Packing list
- Copy of the passport
- Power of attorney
- Two Copies of each Photograph for all Cultural Items (Photographs should not be combined)
- Electrical appliances should be marked on packing lists with serial numbers
- Photos of cultural items

Every in-bound out-bound shipment is subject to issuance of customs declaration for each Harmonized system code (HS code). Cost of customs declarations will be advised during customs clearance process.

#### Documents required for customs clearance of household goods

- Weapons of all kinds
- Pornography
- Drugs
- Toxic / Radioactive material
- Wild life objects
- Food items

#### IMPORT OF WINE AND SPIRITS:

3 litres per shipment. Excess is subject to duties and taxes as follows:  
From 1 euro per liter up to 2 euro per liter customs duty (depending on the % of alcohol)  
25 % of CIF value 18% VAT of CIF value  
0.5 % of CIF value Customs fee

#### Prohibited Articles

**NOTE:** Precious jewelry, stones and currency can be imported only as accompanied baggage and must be declared with the customs authorities at the airport at the time of arrival. The declaration should be kept in safe custody as the same will be required for presentation to the customs authorities at the time of departure

#### DIPLOMATS:

- Waybill
  - Original technical passport or certificate of title
  - Passport copy
  - Visa copy
  - Diplomatic card copy
  - Vehicle registration documents
  - Power of attorney
- Only Diplomats can import vehicles without any deposit on duty free basis.**

Exact amount of deposit is to be determined by Customs authorities only after inspection & depending on the condition / model of the vehicle. Permanent import of vehicles is subject to payment of customs duties as per fixed customs tariff. Right hand drive cars and cars with tinted glasses are not allowed for import into Azerbaijan

- Waybill
- Original technical passport or certificate of title
- Passport copy
- Visa copy
- Vehicle registration documents
- Power of attorney
- Employment confirmation

#### Documents required for customs clearance of Motor Vehicles

#### FOREIGNERS:

Vehicles can be imported for 2 years only on duty and tax free temporary basis. Temporary import is subject to refundable deposit at Customs committee.

#### Pets

- Waybill
- Vaccination certificate
- Veterinary certificate
- Pet passport copy
- Owner's passport copy

- Power of Attorney notarized
- Owner's presence before pet's arrival is a must
- Blood test
- Import/Export permission

#### Special requirements for customs regulations

Wildlife objects, parts, any souvenirs made of wild animals can be imported and exported with special Certificate/Export permission which must be arranged by the customer in the Ministry of National Resources and Ecology

**ROUTING:** to Azerbaijan

**SURFACE:** via Poti Port, Georgia

**AIR:** via Baku, Azerbaijan; Amsterdam Schiphol, The Netherlands

**NOTE:** Globalink offers scheduled air freight, FCL services on the above mentioned routes.  
Rates are available upon request. Please send requests to [removals@globalinklogistics.com](mailto:removals@globalinklogistics.com)

DESTINATION RATE SCHEDULE

REF: GT\_12/24

SURFACE SHIPMENTS

Rates for Transit Customs Clearance in Poti Port, Georgia and Transportation ex. Poti Port to Baku Terminal, Azerbaijan

	1x20' Container	1x40' Container	1x40' HC Container
Transit customs clearance in Poti Port and further trucking to Baku terminal	\$1950	\$2050	\$1900
Destination services ex. Baku terminal to the residence in Baku	\$1250	\$1950	\$2200

**NOTE:** Please ask for consignment instructions and documentation requirements before sending the shipment in order to avoid any extra storage/demurrage charges.

FCL SHIPMENTS • Density 6.5lbs

Rates are quoted in US Dollars per gross hundred pounds (GCWT)	From terminal Baku to residence Baku							
	min chargeable per shipment up to 1000 lbs	1001 — 2000lbs	2001 — 3000lbs	3001 — 4000lbs	4001 — 5000lbs	5001 – 6000lbs	6001 – 8000lbs	Over 8001lbs
	400	40	30	25	20	20	18	18

VEHICLE

Rates in US Dollars	From terminal Baku to handover at Globalink Warehouse in Baku	
	One vehicle in 1x20' container	
	450	

AIR FREIGHT SHIPMENTS

AIR SHIPMENTS • Density 6.5lbs

Rates are quoted in US Dollars per gross hundred pounds (GCWT)	From airport Baku to residence Baku						
	Minimum chargeable per shipment up to 500 lbs	501 — 1000lbs	1001 — 2000lbs	2001 — 3000lbs	3001 — 4000lbs	4001 — 5000lbs	over 5001lbs
	350	55	40	30	25	20	20

NOTE: Please pay attention to general terms and conditions on page 37.

NOTE: Rates are valid within a 50 kilometers delivery radius.



Please request for rate for each move.

## USEFUL INFORMATION & CUSTOMS REGULATIONS

### COUNTRY

### AFGHANISTAN

#### Import documents needed for clearance

1. AWB/BL
2. Detailed packing list
3. Invoice with value
4. Export declaration from origin
5. Exemption letter

#### Prohibited items

- Alcohol, Tobacco
- Drugs
- Jewelry, Precious metals, Precious stones
- Magazines
- Money
- Perfumes/flammables
- Animals/Pets
- Religious books other than dealing with Islamic beliefs, controversial political literature and materials contrary to an Islamic State principles
- Swords/daggers/spears etc
- Carvings and statues of humans, especially nude

- Weapons / ammunition / grenades / explosives / antique weapons / weapon parts
- Pornography / contraceptives
- Radioactive materials
- Furs, Ivory, endangered animals
- Seeds, plants, soils
- Asbestos
- Gambling devices
- Pork

**Food can be imported, but permission certificate from Authority will be required (should be rechecked before shipment arrival and not recommended due to long process).**

#### Notes

No shipping without green light.

Surface import via Karachi may require police escort, rate 2500 USD /-per container. Demurrage for container and truck may happen.

**ROUTING:** to Afghanistan

**SURFACE:** via Karachi, Pakistan

**AIR:** via Kabul Airport

**NOTE:** Globalink offers scheduled air freight, FCL services on the above mentioned routes.  
Rates are available upon request. Please send requests to [removals@globalinklogistics.com](mailto:removals@globalinklogistics.com)

DESTINATION RATE SCHEDULE

REF: GT\_12/24

SURFACE SHIPMENTS

FCL/LCL SHIPMENTS • Density 6.5lbs

Rates are quoted in US Dollars per gross hundred pounds (GCWT)	From terminal Kabul to residence Kabul							
	min chargeable per Shipment up to 1000 lbs	1001 — 2000lbs	2001 — 3000lbs	3001 — 4000lbs	4001 — 5000lbs	5001 — 6000lbs	6001 — 8000lbs	Over 8001lbs
	4800	430	300	215	180	175	150	130

\* Import duties will be applied as per actual receipt  
\* LCL shipments are not allowed

VEHICLE

Rates in US Dollars	From terminal Kabul to handover at Globalink Warehouse in Kabul	
	One vehicle in 1x20' container	
	7800	

NOTE: Please pay attention to general terms and conditions on pages 37.  
NOTE: Rates are valid till within a 50 kilometers delivery radius



## USEFUL INFORMATION & CUSTOMS REGULATIONS

### COUNTRY

### GEORGIA

#### Document needed for customs clearance of household goods

##### DIPLOMATS:

- Waybill
- Packing list
- Passport copy
- Visa copy
- Diplomatic card copy
- Power of attorney on company Letterhead
- Pro-forma Invoice

##### NON-DIPLOMATS:

Cargoes of value up to 3000 GEL are subject to payment of customs fees of 100 GEL. Cargoes of value from 3000 GEL to 15000 GEL are subject to payment of customs fees of 400 GEL. Cargoes of a value more than 15000 GEL are subject to payment of customs fees of 500 GEL.

All in-bound non-diplomatic shipments are subject to payment of customs VAT of 18% of CIF value.

- Waybill
- Detailed inventory list with number of pieces, weight and value
- Passport copy
- Visa copy
- Notarized power of attorney / on consignee organization letterhead
- Pro-forma Invoice
- Transportation costs confirmation
- Employment confirmation

#### Prohibited Articles

- Toys are limited up to 30kgs per shipment
- Detergents
- Wildlife specimen /trophies
- Weapons of all kinds
- Pornography
- Narcotics
- Toxic material
- Radioactive material
- Food (cat/dog food, etc.)

- Alcohol
- Medicine
- Sand/Rock
- Any kind of plants

##### IMPORT OF WINE AND SPIRITS:

2 litres per shipment. Excess is subject to import duties/taxes.

#### Documents required for customs clearance of motorvehicles

- Waybill
- Passport copy
- Visa copy
- Pro-forma invoice
- Transportation costs confirmation
- Original technical passport/certificate of title for the car
- Notarized power of attorney/from consignee's organization
- Certificate of origin

##### NOTES:

- Excise and import fee apply depending on vehicle's year of manufacture and engine volume
- Car owner will have to cover a declaration fee during registration - approx 100\$

#### Pets

- AWB copy,
- Consignee's passport copy
- Invoice
- Vaccination certificate
- Veterinary certificate
- Passport of the pet (with chip number)
- Notarized POA
- Import permit

##### NOTE:

VAT applies to non-diplomatic owners

#### Special requirements in customs regulations

- The consignee's organization mentioned on the waybill MUST be registered in Georgia
- Any shipment is subject to random customs inspection process. Additional charges may occur.

**ROUTING:** to Georgia

**SURFACE:** via Poti Port, Georgia

**AIR:** via Tbilisi, Georgia and Amsterdam Schiphol, The Netherlands

**NOTE:** Globalink offers scheduled air freight, FCL services on the above mentioned routes.  
Rates are available upon request. Please send requests to [removals@globalinklogistics.com](mailto:removals@globalinklogistics.com)

DESTINATION RATE SCHEDULE

REF: GT\_12/24

SURFACE SHIPMENTS

Rates for Transit Customs Clearance in Poti Port, Georgia and Transportation  
ex. Poti Port to Tbilisi Terminal, Georgia

	1x20' Container	1x40' Container	1x40' HC Container
Transit customs clearance in Poti Port and further trucking to Tbilisi terminal	\$1650	\$2300	\$2450
Destination services ex. Tbilisi terminal to the residence in Tbilisi	\$1100	\$1500	\$1650

**NOTE:** Please ask for consignment instructions and documentation requirements before sending the shipment in order to avoid any extra storage/demurrage charges.

FCL/LCL SHIPMENTS • Density 6.5lbs

Rates are quoted in US Dollars per gross hundred pounds (GCWT)	From terminal Tbilisi to residence Tbilisi							
	min chargeable perup to 1000 lbs shipment	1001 — 2000lbs	2001 — 3000lbs	3001 — 4000lbs	4001 — 5000lbs	5001 — 6000lbs	6001 — 8000lbs	Over 8000lbs
	400	45	30	30	25	25	20	20

VEHICLE

From terminal Tbilisi to handover at Globalink Warehouse in Tbilisi	
Rates in US Dollars	One vehicle in 1x20' container
	450

AIR SHIPMENTS FREIGHT

AIR SHIPMENTS • Density 6.5lbs

Rates are quoted in US Dollars per gross hundred pounds (GCWT)	From airport Tbilisi to residence Tbilisi						
	Minimum chargeable per Shipment up to 500lbs	501 — 1000lbs	1001 — 2000lbs	2001 — 3000lbs	3001 — 4000lbs	4001 — 5000lbs	Over 5001lbs
	400	80	45	30	30	25	25

NOTE: Please pay attention to general terms and conditions on page 37

NOTE: Rates are valid within a 50 kilometers delivery radius.



## USEFUL INFORMATION & CUSTOMS REGULATIONS

### COUNTRY

### KAZAKHSTAN

#### FOREIGNERS / DIPLOMATS:

- Waybill,
- Detailed inventory
- List of electronic items
- Passport copy
- Visa / diplomatic card copy
- Power of Attorney notarized / on letterhead of local employer
- Employment Confirmation
- Brokerage Agreement
- Pro-forma invoice

#### RETURNING CITIZENS:

- Waybill,
- Detailed inventory
- List of electronic items
- Passport copy/Kazakh ID copy
- Power of Attorney notarized
- Brokerage Agreement
- Pro-forma invoice

All in-bound non-diplomatic shipments are subject to customs duties and taxes

#### Documents required for customs clearance of household goods

**Shipments within Customs Union (Russia, Belarus, Kazakhstan, Armenia, Kyrgyzstan) are duty free**

- Detergent
- Wildlife specimen / trophies
- Religious items
- New items
- Food items (including dry, canned, spices)
- Beverages, spirits, alcohol drinks
- Medicines (including regular house medical kit)
- New liquids (gel, shampoo, etc.)
- Weapons of any kind
- Pornography
- Drugs
- Toxic / radioactive material

#### NOTE:

Precious jewelry, stones, medicines and currency can be imported only as accompanied baggage

#### Prohibited Articles

- Copy of Technical Passport / Certificate of Title
- Pro-forma invoice
- Waybill
- Consignee passport copy / Kazakh ID
- Power of Attorney notarized / on letterhead of local employer
- Brokerage Agreement

Euro5 standard applies

#### Documents required for customs clearance of motor vehicles

- Waybill
- Microchip
- Vaccination certificate
- Veterinary certificate
- International pet passport/Form 15 endorsed by origin Vet Authorities
- Owner's passport copy
- IIN
- Visa copy

#### Pets

#### Special requirements for customs regulations

- Any non-diplomatic shipment can be inspected upon arrival. Receiving NSC (National Security Committee) permission for electronics. Import customs clearance takes approx. 5 - 7 working days
- Do not send insurance or any other documents showing true value of the goods along with the shipment to avoid payment of heavy import duties.



**ROUTING:** to Kazakhstan

**SURFACE:** via Hamburg, Bremerhaven Ports, Germany; Riga, Latvia, Poti, Georgia

**AIR:** via Almaty, Kazakhstan; Dubai, UAE and Amsterdam Schiphol, The Netherlands.

**NOTE:** Globalink offers scheduled air freight, FCL/LCL services on the above mentioned routes.  
Rates are available upon request. Please send requests to [removals@globalinklogistics.com](mailto:removals@globalinklogistics.com)

**DESTINATION RATE SCHEDULE**

**REF: GT\_12/24**

**SURFACE SHIPMENTS**

**FCL/LCL SHIPMENTS • Density 6.5lbs**

Rates are quoted in US Dollars (GCWT)	From terminal Almaty to residence Almaty						
	Minimum chargeable per shipment up to 1000lbs	1001 — 2000lbs	2001 — 3000lbs	3001 — 4000lbs	4001 — 5000lbs	5001 – 8000lbs	Over 8000 lbs
	550	65	55	50	45	40	35

**VEHICLE**

Rates in US Dollars	From terminal Almaty to handover at Globalink Warehouse in Almaty / clients residence within Almaty city limits	
	One vehicle in 1x20' container	
	650	

**AIR FREIGHT SHIPMENTS**

**AIR SHIPMENTS • Density 6.5lbs**

Rates are quoted in US Dollars per gross hundred pounds (GCWT)	From airport Almaty / Astana in Kazakhstan to residence Almaty / Astana						
	Minimum chargeable per shipment up to 500lbs	501 — 1000lbs	1001 — 2000lbs	2001 — 3000lbs	3001 — 4000lbs	4001 — 5000lbs	Over 5001lbs
	550	70	65	55	50	45	40

NOTE: Please pay attention to general terms and conditions on page 37

NOTE: Rates are valid within a 50 kilometers delivery radius.



## USEFUL INFORMATION & CUSTOMS REGULATIONS

### COUNTRY

### KYRGYZSTAN

#### Documents required for customs clearance of household goods

##### DIPLOMATS:

- Waybill
- Packing list
- Passport copy
- Diplomatic card copy
- Power of attorney from local employer
- Employment confirmation
- Photos of cultural items

##### FOREIGNERS:

- Waybill
- Packing list
- Passport copy
- Visa copy
- Power of attorney notarized
- Employment confirmation
- Photos of cultural items

**IMPORTANT:** Consumables are prohibited for temporary importation into Kyrgyzstan and can be imported for permanent regime only.

##### RETURNING CITIZENS:

- Waybill
- Packing list
- Passport copy
- Power of attorney notarized
- Photos of cultural items

All inbound non-diplomatic shipments are subject to payment of customs duties and taxes, calculated based on 4 EUR per kg. gross;  
Import/Export declaration: 35 Eur per 1st p/30 Eur per each additional

#### Prohibited Articles

- Weapons of all kinds
- Pornography
- Drugs
- Toxic/Radioactive material
- Wildlife specimen/trophies

- Plants
- Precious metals
- Food

##### IMPORT OF WINE AND SPIRITS:

The allowance limit for import of wine and spirits for personal consumption is one liter per shipment

#### Documents required for customs clearance of motor vehicles

##### DIPLOMATS:

- Waybill
- Pro-forma invoice
- Technical passport copy / certificate of title
- Passport copy
- Diplomatic card copy
- Power of attorney from local employer
- Employment confirmation

##### FOREIGNERS:

- Waybill
- Pro-forma invoice
- Technical passport copy / certificate of title
- Passport copy
- Visa copy
- Power of attorney notarized
- Employment confirmation

##### RETURNING CITIZENS:

- Waybill
- Pro-forma Invoice
- Technical passport copy / certificate of title
- Passport copy
- Power of attorney notarized

##### NOTES:

- Temporary importation is subject to customs duty of 14% VAT and 0.2% customs fee per month
- Cars must be exported out of Kyrgyzstan at the end of owner's assignment
- Permanent importation is subject to taxes and duties as per customs tariff
- Sale of temporary imported cars is allowed after full payment of customs duty and VAT

#### Pets

- Vaccination certificate
- Veterinary certificate

- International pet passport / Form 15 endorsed by origin Vet authorities
- Owner's passport copy

**ROUTING:** to Kyrgyzstan

**SURFACE:** via Hamburg, Bremerhaven Ports, Germany; Riga, Latvia; Poti, Georgia

**AIR:** Bishkek, Kyrgyzstan; via Almaty, Kazakhstan; Dubai, UAE and Amsterdam Schiphol, The Netherlands.

**NOTE:** Globalink offers scheduled air freight, FCL/LCL services on the above mentioned routes.  
Rates are available upon request. Please send requests to [removals@globalinklogistics.com](mailto:removals@globalinklogistics.com)

DESTINATION RATE SCHEDULE

REF: GT\_12/24

SURFACE SHIPMENTS

FCL/LCL SHIPMENTS • Density 6.5lbs

Rates are quoted in US Dollars (GCWT)	From terminal Bishkek to residence Bishkek							
	min chargeable per shipment up to 1000 lbs	1001 — 2000lbs	2001 — 3000lbs	3001 — 4000lbs	4001 — 5000lbs	5001 — 6000lbs	6001 – 8000lbs	Over 8001lbs
	350	35	30	25	20	20	20	15

VEHICLE

Rates in US Dollars	From terminal Bishkek to residence Bishkek	
	One vehicle in 1x20' container	
	500	

Destination services rates for the shipment of household goods and personal effects  
ex. arrival Bishkek rail terminal, Kyrgyzstan

	1x20' Container	1x40' Container
Bishkek, Kyrgyzstan	\$1320	\$1720
Estimated THC at terminal / rail terminal	\$200	\$350

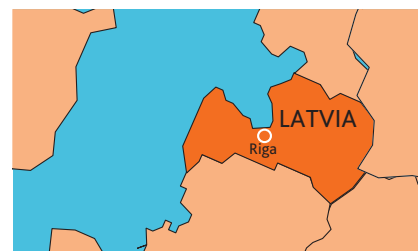
**NOTE:** Please ask for consignment instructions and documentation requirements before sending the shipment in order to avoid any extra storage/demurrage charges.

AIR FREIGHT SHIPMENTS

AIR SHIPMENTS • Density 6.5lbs

Rates are quoted in US Dollars per gross hundred pounds (GCWT)	From airport FRU Bishkek to residence Bishkek						
	Minimum chargeable per shipment up to 500 lbs	501 — 1000lbs	1001 — 2000lbs	2001 — 3000lbs	3001 — 4000lbs	4001 — 5000lbs	Over 5001lbs
	\$360	40	35	30	25	20	20

NOTE: Please pay attention to general terms and conditions on pages 37.



## USEFUL INFORMATION & CUSTOMS REGULATIONS

### COUNTRY

### LATVIA

#### Documents required for customs clearance of household goods

- Passport copy
- Diplomatic franchise (diplomats)
- Detailed inventory in English
- Pro-forma invoice
- Formal letter to Customs with detailed information about reasons of moving into Latvia (the first time or return, temporary move or permanent, etc.)
- Employment confirmation!
- Copy of employment contract (foreigners)
- Rental agreement (foreigners) / proof of real estate ownership (returning citizens or EU citizens from outside the EU)
- Proof of living abroad from origin shipping country of European Union (EU) for a period of at least 12 months) (returning citizens, EU citizens from outside the EU)

#### SPECIFIC INFORMATION:

The shipment must arrive within 12 months of the owner of the goods' arrival.

Diplomats are eligible to import household shipments duty free.

Returning citizens may import household shipments duty free if having lived abroad for at least 12 months.

Returning citizens must present a letter issued by the Repatriation Centre of Latvian Citizenship and Migration Affairs confirming their status and may import household shipments duty free.

If the owner of the goods is not a resident of Latvia, they must have a residence and work permit before arriving to Latvia.

If documents are not present at the time of Customs clearance, the shipment will be delayed.

For shipments entering by roadway, Customs must be notified and receive documents at least 1 hour prior to shipment arrival.

#### Prohibite Articles

- Weapons of all kinds
- Medicines
- Alcohol

- Food and tobacco
- Pornography
- Wildlife specimen/trophies

#### Documents required for customs clearance of motor vehicles

- Technical passport
- Proof of ownership for a period of at least 6 months.

#### SPECIFIC INFORMATION:

Motor vehicles must be registered in the name of the owner.

Motor vehicles may enter duty free only if owned and operated for a minimum of 6 months and the vehicle meets European requirements.

The vehicle must have a valid license plate and third-party liability (TPL) insurance policy valid within the entire territory of the European Economic Area (EEA) and Switzerland.

#### Pets

#### DOCUMENTS REQUIRED:

- Rabies vaccination certificate valid for 12 months
- International vaccination book/pet passport
- Veterinary health certificate in English
- EU health certificate for non-commercial entry
- Microchip
- RNATT test certificate original

#### SPECIFIC INFORMATION:

The veterinary health certificate must be issued by a licensed veterinarian within 10 days of import.

#### Special requirements in customs regulations

#### ANTIQUES, ARTIFACTS, CARPETS, PAINTINGS

##### Antiques and artwork:

- All antiques and artwork must be declared
- Two photographs per each item
- Contact the destination agent for specific information

**ROUTING:** to Latvia

**SURFACE:** via Riga port, Latvia

**AIR:** via Riga airport

**NOTE:** Globalink offers scheduled air freight, FCL/LCL services on the above mentioned routes.  
Rates are available upon request. Please send requests to [removals@globalinklogistics.com](mailto:removals@globalinklogistics.com)

DESTINATION RATE SCHEDULE

REF: GT\_12/24

SURFACE SHIPMENTS

FCL/LCL SHIPMENTS • Density 6.5lbs

Rates are quoted in US Dollars (GCWT)	From Riga port to residence Riga							
	Minimum chargeable per shipmentup to 1000 lbs	1001— 2000lbs	2001 — 3000lbs	3001 — 4000lbs	4001 — 5000lbs	5001 — 6000lbs	6001 — 8000lbs	Over 8001lbs
	Min. 1450	130	80	60	55	50	45	35

VEHICLE

Rates in US Dollars	From terminal Riga port to handover at Warehouse in Riga	
	One vehicle in 1x20' container	
	1350	

AIR FREIGHT SHIPMENTS

AIR SHIPMENTS • Density 6.5lbs

Rates are quoted in US Dollars per gross hundred pounds (GCWT)	From airport Riga to residence Riga						
	Minimum chargeable per shipmentup to 500 lbs	501 — 1000lbs	1001 — 2000lbs	2001 — 3000lbs	3001 — 4000lbs	4001 — 5000lbs	Over 5000lbs
	995	140	130	85	65	55	45



## USEFUL INFORMATION & CUSTOMS REGULATIONS

### COUNTRY

### LITHUANIA

#### DIPLOMATS:

- Waybill
- Packing list
- Passport copy
- Visa copy
- Diplomatic card copy
- Power of attorney from the consignee's organization
- Pro-forma Invoice

#### NON-DIPLOMATS:

- Original Waybill
- Packing list
- Passport copy
- Visa copy
- Power of attorney from the consignee's organization
- Pro-forma Invoice

#### Specific information:

- The owner of the goods should be present at the destination and should have a valid visa
- The owner of the goods should be employed with a registered company
- Temporary import of household goods and personal effects is duty and taxes free
- Permanent import of household and personal effects is subject to customs duties and taxes.
- Additionally, a value added tax (VAT) of 20% is charged upon import.
- Only a limited amount of foodstuff, new items, and electronics are allowed duty free.
- This is valid for 12 months and can be renewed every year until the time the foreigner has finished his or her stay and is ready to re-export the shipment.

#### Documents required for customs clearance of household goods

#### Prohibited articles and restricted articles

- Alcohol (limits vary, info is available upon request)
- Tobacco (limited to 250gr)
- Weapons of all kinds
- Pornography
- Narcotics
- Toxic/radioactive items
- Live animals

- Sugar, chocolate, coffee (limited amount)
- Medicine
- Petrol (limited to 20 litres)
- Jewellery

#### IMPORT OF WINE AND SPIRITS:

All wine and spirits are subject to import duties/taxes

#### Documents required for customs clearance of motor vehicles

- Waybill
- Passport copy
- Visa copy
- Pro-forma invoice
- Transportation costs confirmation
- Original technical passport/certificate of title
- Power of attorney from the consignee's organization
- Certificate of origin

#### Pets

- Vaccination certificate
- International vaccination book/ pet passport
- EU health certificate for non-commercial entry
- Microchip
- Rabies vaccination
- Original RNATT test certificate

#### Specific information:

Cats and dogs are subject to special regulations of the European Parliament and of the Council (EC No. 998/200)

**ROUTING:** to Lithuania

**SURFACE:** via Klaipeda, Lithuania

**AIR:** via Vilnius Airport

**NOTE:** Globalink offers scheduled air freight, FCL/LCL services on the above mentioned routes.  
Rates are available upon request. Please send requests to [removals@globalinklogistics.com](mailto:removals@globalinklogistics.com)

DESTINATION RATE SCHEDULE

REF: GT\_12/24

FCL/LCL SHIPMENTS • Density 6.5lbs

Rates are quoted in US Dollars per gross hundred pounds (GCWT)	From terminal Vilnius to residence Vilnius							
	min chargeable per shipment up to 1000 lbs	1001 — 2000lbs	2001 — 3000lbs	3001 — 4000lbs	4001 — 5000lbs	5001 — 6000lbs	6001 — 8000lbs	over 8001lbs
	1500	140	90	70	60	50	45	35

VEHICLE

Rates in US Dollars	From Klaipeda port to handover at Warehouse in Vilnius	
	One vehicle in 1x20' container	
	1400	

AIR FREIGHT SHIPMENTS

AIR SHIPMENTS • Density 6.5lbs

Rates are quoted in US Dollars per gross hundred pounds (GCWT)	From airport Vilnius VNO to residence Vilnius						
	Minimum chargeable per shipment up to 500 lbs	501 — 1000lbs	1001 — 2000lbs	2001 — 3000lbs	3001 — 4000lbs	4001 — 5000lbs	Over 5001lbs
	1350	150	140	90	70	60	50

NOTE: Please pay attention to general terms and conditions on pages 37.

NOTE: Above mentioned customs regulations are based on current legislation. Please verify customs regulations prior to booking any shipment.





## USEFUL INFORMATION & CUSTOMS REGULATIONS

### COUNTRY MONGOLIA

#### Documents required for customs clearance of household goods

##### DIPLOMATIC SHIPMENT:

- Waybill
- Packing list
- Passport copy
- Diplomatic card copy
- Power of Attorney from local employer

##### FOREIGNERS:

- Waybill
- Packing list
- Passport copy
- Visa copy
- Employment confirmation
- Pro-forma invoice
- Power of attorney

##### RETURNING CITIZENS:

- Waybill
- Packing list
- Passport copy
- Valid national ID card
- Employment confirmation
- Pro-forma invoice
- Power of attorney

#### Prohibited Articles

- Weapons of all kinds
- Animal products
- Drugs
- Pornography
- Medicines
- Alcohol and spirits of more than 75% alcohol content
- Food
- Plants
- Tobacco
- Chemicals and toxic materials
- Collectible coins and stamps

- Credit Cards, money
- Drones
- Precious metal
- Religious items
- Historical antiques

#### Documents required for custom clearance of motor vehicles

- Waybill
- Technical passport / certificate of title
- Origin purchase invoice
- Power of attorney

#### Pets

- Waybill
- Passport of the owner
- Pet passport
- Residence permit
- Certificate of vaccination
- Veterinary health certificate endorsed by the official government veterinarian

#### Special requirements for customs regulations

The owner of goods should be in Mongolia when the shipment arrives. Consignee may be required to be present at customs in person.

**ROUTING:** to Mongolia

**SURFACE:** via Xingang, China; Busan, Incheon, South Korea; Hamburg and Bremerhaven ports, Germany; Riga, Latvia

**AIR:** via Ulaanbaatar, Mongolia; Incheon, South Korea;

**NOTE:** Globalink offers air freight, FCL/LCL services on the above mentioned routes.  
Rates are available upon request. Please send requests to [removals@globalinklogistics.com](mailto:removals@globalinklogistics.com)

DESTINATION RATE SCHEDULE

REF: GT\_12/24

SURFACE SHIPMENTS

FCL/LCL SHIPMENTS • Density 6.5lbs

Rates are quoted  
in US Dollars  
(GCWT)

From terminal Ulaanbaatar to residence Ulaanbaatar							
Minimum chargeable per shipment	1001— 2000lbs	2001— 3000lbs	3001— 4000lbs	4001— 5000lbs	5001— 6000lbs	6001— 8000lbs	Over 8000lbs
550	50	35	30	30	28	27	25

AIR FREIGHT SHIPMENTS

AIR SHIPMENTS • Density 6.5lbs

Rates are quoted  
in US Dollars per  
gross hundred pounds  
(GCWT)

From airport Ulaanbaatar to residence Ulaanbaatar					
Minimum chargeable per shipment	501— 1000lbs	1001— 2000lbs	2001— 3000lbs	3001— 4000lbs	4001— 5000lbs
450	45	40	35	33	30

NOTE: Please pay attention to general terms and conditions on page 37.  
NOTE: Rates are valid within a 50 kilometers delivery radius.



## USEFUL INFORMATION & CUSTOMS REGULATIONS

### COUNTRY

### PAKISTAN

#### Documents required for customs clearance of household goods

##### Residence Availing/Eligible for Transfer of Residence (TR):

- Original passports, showing all travel history
- Original or Express BL/AWB (duly endorsed by consignee)
- Packing list in detail, especially electrical items with Make/models, etc
- Transfer of residence (TR) form (to be provided by the destination agent to the customer for signature and the agent will fill the form)
- National Identity Card copy for Pakistani Nationals
- Valid Visa (for foreign nationals only)
- Employment letter (for foreign nationals only)
- Signatures on Customs/Shipping Line/Air Authority by the consignee
- NICOP for dual Nationals

##### Residents not eligible for the TR facility:

- Original Passport showing all travel history
- Original or Express BL/AWB (duly endorsed by consignee)
- Packing list in detail, especially electrical items with Make/models, etc
- National Identity Card copy for Pakistani Nationals
- Signatures on Customs/Shipping Line/Air Authority by the consignee
- NICOP for dual Nationals

##### Diplomats removals:

- Duty/Tax Exemption Certificate issued by the Ministry of Foreign Affairs in Pakistan
- Original or Express BL/AWB
- Inventory/ Packing list
- Authority letter from Mission for Customs and Shipping line/Airline
- Copy of passport with valid visa of Pakistan with arrival stamp page

##### Temporary Visitors/Tourists:

- Original passport
- Original or Express BL/AWB
- Packing list
- Signatures on Customs and Shipping Line/Airline authority letters

#### Prohibited Articles

- Antiquities without notarized purchase invoice and certificate of origin
- Any publications or books, or magazines against Islam or Pakistan
- Ivory
- All goods of Israeli origin
- Narcotics
- DVDs
- Weapons of all kinds
- Alcohol

- Pornography or related magazines
- Drugs
- Toxic/ Radioactive materials
- Food
- 3D printers/ Gambling Equipment / Firearms and other similar devices
- Translation of the Holy Quran without Arabic text and etc.

#### Documents required for customs clearance of motor vehicles

- OBL/AWB
- Goods Declaration Form
- Original Passport
- Certificate of Title
- Invoice of purchase
- De-registration Certificate (in case of used car import)
- National Identity Card copy for Pakistani Nationals
- Signatures on customs and Shipping line/ Airline authority letters
- National ID card (NICOP) for dual Nationals

##### Most important:

- Under export policy personal Vehicles. Requires export permission from Ministry of Commerce
- **Note:** Cars (Sedan/Coupe) cannot be more than 36 months old. SUV's/motorbikes cannot be more than 60 months old
- Export of cars, bike or any other vehicles is not allowed
- Left-hand drive cars are not allowed to export by Pakistani nationals
- Old and Used cars exportation: Diesel variant vehicles more than 3 years old are not allowed to export. Petrol variant Vehicles more than 5 years are not allowed to export.

##### Cars/passenger vehicles can be exported under below:

- Expats, UN Privileged personnel
- A diplomat is allowed to export his/her vehicle subject to conditions on vehicles age, on the basis of the export certificate from the Ministry of Foreign Affairs (MOFA) to be obtained by the embassy/UN Organization.

#### Pets

- Health & Vaccination Certificates issued by concerned Authority at originating country
- Passport of owner
- Quarantine, Health Certificate issued by vet doctor, Government of Pakistan.
- Pet passport
- AWB
- Authorization letter
- Copy of CNIC (Computerized National Identity Card) for Pakistani Nationals
- Copy of National ID card (NICOP) for dual nationals

Pet is allowed as manifested cargo only

Pre-release for export clearance (required at least 48 hours prior to departure of flight) is possible upon submission of AWB + Health & Certificate + Quarantine Certificate and copies of passports.

Conditions of export: Export is subject to quarantine requirement of Animal Quarantine Department of Ministry of Health, Government of Pakistan

#### Special requirements for customs regulations

As per Pakistan Customs regulation consignee presence in Pakistan is essential at the time of clearance as well as original passport of the consignee is required to clear the shipment. Otherwise shipment can not be customs cleared.

Customs clearance will take approx. 4-7 days after arrival of the shipment. Do not send insurance or any documents showing true value of the goods along with the shipment to avoid payment of heavy import duties.

**ROUTING:** to Pakistan

**SURFACE:** via Karachi, Pakistan

**AIR:** via Islamabad, Pakistan; Dubai, UAE

**NOTE:** Globalink offers air freight, FCL/LCL services on the above mentioned routes.  
Rates are available upon request. Please send requests to [removals@globalinklogistics.com](mailto:removals@globalinklogistics.com)

DESTINATION RATE SCHEDULE

REF: GT\_12/24

SURFACE SHIPMENTS

FCL/LCL SHIPMENTS • Density 6.5lbs

Rates are quoted in US Dollars	From Port Karachi to residence Islamabad							
	min chargeable per up to 1000 lbs shipment	1001 — 2000lbs	2001 — 3000lbs	3001 — 4000lbs	4001 — 5000lbs	5001 — 6000lbs	6001 — 8000lbs	Over 8001lbs
	2200	140	130	95	75	65	55	45

VEHICLE

Rates in US Dollars	From Port Karachi to handover at Globalink Warehouse in Islamabad	
	One vehicle in 1x20' container	
	1900	

AIR FREIGHT SHIPMENTS

AIR SHIPMENTS • Density 6.5lbs

Rates are quoted in US Dollars per gross hundred pounds (GCWT)	From airport Islamabad to residence Islamabad						
	Minimum chargeable per shipment up to 500 lbs	501 — 1000lbs	1001 — 2000lbs	2001 — 3000lbs	3001 — 4000lbs	4001 — 5000lbs	Over 5001lbs
	650	85	80	65	55	45	40

D/O and CAA charges – 0.85 per kg gross/ chargeable as on air waybill

NOTE: Please pay attention to general terms and conditions on page 37.

NOTE: Rates are valid till within a 50 kilometers delivery radius



## USEFUL INFORMATION & CUSTOMS REGULATIONS

### COUNTRY

### RUSSIA

#### RETURNING CITIZENS:

- Waybill
- Packing list
- Passport copy
- Separate inventory with detailed description, photos and values of all objects of art
- Notarized power of attorney
- Customs declaration form for unaccompanied baggage stamped and signed by customs officer at the airport/terminal upon arrival of shipper (details and sample will be provided by Globalink office in Russia).

#### FOREIGNERS:

- Waybill
- Packing list
- Passport copy
- Separate inventory with detailed description, photos and values for all objects of art.
- Letter on Embassy letterhead to diplomatic Russian authorities (sample to be provided by Globalink Russia)
- Diplomatic card copy, visa copy
- Power of attorney legalized by Russian notary

#### Documents required for customs clearance of motor vehicles

##### NOTE:

Customs duty is applicable at 4 EUR per kg (gross) for all non—diplomatic shipments (the first 31 kgs is free from customs duty and taxes)

#### Prohibited Articles

- Detegent
- Wildlife specimen/trophies
- Religious items
- New items
- Food items
- Beverages, spirits, alcohol drinks
- Medicines
- New liquids (gel, shampoo)
- Weapons of any kind

- Narcotics/drugs
- Toxic/radioactive material

**IMPORT OF WINE AND SPIRITS:**  
2 litres per shipment

#### Documents required for customs clearance of motor vehicles

- Technical Passport/Certificate of title
- Pro-forma invoice
- Waybill
- Employment confirmation letter for foreigners

##### NOTE:

Any private vehicle to be imported permanently must be equipped with ERA Glonass system

#### Pets

- Vaccination certificate
- Veterinary certificate
- Pet passport
- Waybill
- Blood test
- Owner's passport copy

#### Special requirements for customs regulations

- Russian citizen should keep their arrival declaration (copy)

**ROUTING:** to Russia

**SURFACE:** Hamburg, Bremerhaven ports, Germany; Riga Port, Latvia.

**AIR:** Moscow, Russia and Amsterdam Schiphol, the Netherlands; Dubai, UAE.

**NOTE:** Globalink offers scheduled air freight, FCL services on the above mentioned routes.  
Rates are available upon request. Please send requests to [removals@globalinklogistics.com](mailto:removals@globalinklogistics.com)

DESTINATION RATE SCHEDULE

REF: GT\_12/24

SURFACE SHIPMENTS

FCL/LCL SHIPMENTS • Density 6.5lbs

Rates are quoted in US Dollars per gross hundred pounds (GCWT)	From terminal Moscow to residence Moscow							
	min chargeable per shipment up to 1000 lbs	1001 — 2001lbs	2001 — 3000lbs	3001 — 4001lbs	4001 — 5000lbs	5001 — 6000lbs	6001 — 8000lbs	Over 8001lbs
	1500	95	80	60	50	40	35	30

VEHICLE

Rates in US Dollars	From terminal Moscow to handover at Globalink Warehouse in Moscow						
	2500						

AIR FREIGHT SHIPMENTS

AIR SHIPMENTS • Density 6.5lbs

Rates are quoted in US Dollars per gross hundred pounds (GCWT)	From airport Moscow SVO/DME to residence Moscow						
	Minimum chargeable per shipment up to 500lbs	501 – 1000lbs	1001 – 2000lbs	2001 – 3000lbs	3001 – 4000lbs	4001 – 5000lbs	Over 5001lbs
	850	105	95	75	60	50	45

NOTE: Please pay attention to general terms and conditions on page 37.

NOTE: Rates are valid till within a 50 kilometers delivery radius



## USEFUL INFORMATION & CUSTOMS REGULATIONS

### COUNTRY

### TAJIKISTAN

#### DIPLOMATS:

- Waybill
- Packing list
- Passport copy
- Diplomatic card copy
- Power of attorney from local employer
- Employment confirmation
- Pro-Forma Invoice

#### RETURNING CITIZENS:

- Waybill
- Packing list
- Passport copy
- Power of attorney notarized
- Pro-forma Invoice

#### FOREIGNERS:

- Waybill
- Packing list
- Passport copy
- ID card copy from MFA
- Visa copy
- Power of attorney from local employer
- Employment confirmation
- Pro-Forma Invoice

#### Documents required for customs clearance of household goods

#### Customs prescriptions

- Import customs duties and taxes is 2 USD/- per kg.

#### Prohibited Articles

- Detergents
- Wildlife specimen/trophies
- Religious items
- New items
- Food items
- Beverages, spirits, alcohol drinks
- Medicines
- New liquids (gel, shampoo)
- Weapons of any kind
- Narcotics/drugs
- Toxic/radioactive material

#### IMPORT OF WINE AND SPIRITS: 2 liters per shipment.

#### Documents required for customs clearance of motor vehicles

- Waybill
- Pro-forma invoice
- Passport copy
- Visa copy (for foreigners)
- Diplomatic card copy (for diplomats)
- Power of attorney (for foreigners) from local employer/notarized
- Employment confirmation (for foreigners)
- Vehicles can be imported duty free on temporary basis

**NOTE:** import is subject to tax and duty as per customs tariff. Vehicles older than 2013 year of manufacture are not allowed for import.

#### Pets

- Vaccination certificate
- Veterinary certificate
- Pet passport
- Owner's passport
- Import/export permission

#### Special requirements for customs regulations

- Ministry of Culture permissions for art objects, antiques, wildlife object products



**ROUTING:** to Tajikistan

**SURFACE:** via Hamburg, Bremerhaven ports, Germany; Riga, Latvia and Poti port, Georgia.

**AIR:** via Dushanbe, Tajikistan; Almaty, Kazakhstan; Dubai, UAE

**NOTE:** Globalink offers air freight, FCL/LCL services on the above mentioned routes.  
Rates are available upon request. Please send requests to [removals@globalinklogistics.com](mailto:removals@globalinklogistics.com)

DESTINATION RATE SCHEDULE

REF: GT\_12/24

SURFACE SHIPMENTS

FCL/LCL SHIPMENTS • Density 6.5lbs

Rates are quoted in US Dollars per gross hundred pounds (GCWT)	From terminal Dushanbe to residence Dushanbe							
	min chargeable per shipment up to 1000 lbs	1001 — 2000lbs	2001 — 3000lbs	3001 — 4000lbs	4001 — 5000lbs	5001 — 6000lbs	6001 — 8000lbs	Over 8001lbs
	400	40	30	26	25	22	20	19

VEHICLE

Rates in US Dollars	From terminal Dushanbe to residence Dushanbe	
	One vehicle in 1x20' container	
	500	

Destination Services Rates for the Shipment of Household Goods and Personal Effects  
ex. Arrival Dushanbe Rail Terminal, Tajikistan

	1x20' Container	1x40' Container
Dushanbe, Tajikistan	\$1355	\$2170
Estimated THC	approx \$250	approx \$350

NOTE: Please ask for consignment instructions and documentation requirements before sending the shipment in order to avoid any extra storage/ demurrage charges.

AIR FREIGHT SHIPMENTS

AIR SHIPMENTS • Density 6.5lbs

Rates are quoted in US Dollars per gross hundred pounds (GCWT)	From airport Dushanbe to residence Dushanbe						
	Minimum chargeable per shipment up to 500 lbs	501 — 1000lbs	1001 — 2000lbs	2001 — 3000lbs	3001 — 4000lbs	4001 — 5000lbs	Over 5001lbs
	400	50	40	30	26	25	22



## USEFUL INFORMATION & CUSTOMS REGULATIONS

### COUNTRY

### TURKMENISTAN

#### Documents required for customs clearance of household goods

##### DIPLOMATS:

- Waybill
- Packing list
- Official diplomatic note approved by the Ministry of Foreign Affairs
- The official letter submitted by Embassy to customs committee
- Power of attorney from local employer
- Diplomatic card copy
- Passport copy
- Visa copy

##### FOREIGNERS TEMPORARILY IMPORTING HOUSEHOLD GOODS INTO TURKMENISTAN:

- Waybill
- Packing list
- Detailed pro-forma invoice
- The official letter submitted to the customs committee indicating terms of temporary import
- Power of attorney from local employer
- Employment confirmation
- Customs declaration form (completed at customs post)
- Passport copy
- Visa copy

##### FOREIGNERS PERMANENTLY IMPORTING HOUSEHOLD GOODS INTO TURKMENISTAN:

- Waybill
- Packing list
- Detailed Pro—forma invoice
- Power of attorney from local employer
- Employment confirmation
- Customs declaration form (completed at customs post)
- Passport copy
- Visa copy

##### RETURNING CITIZENS:

- Waybill
- Packing list
- Detailed Pro-forma invoice
- Power of attorney from local employer
- Customs declaration form (completed at customs post)
- Passport copy

##### NOTE:

Turkmen citizens are not permitted to import HHG on temporary import basis and therefore are liable to pay full taxes and duties

#### Prohibited Articles

- Detergent
- Wildlife specimen/trophies
- Religious items
- New items
- Food items
- Alcohol
- Medicines
- New liquids (gel, shampoo)
- Weapons of any kind
- Narcotics/drugs
- Toxic/radioactive material

##### NOTE:

Precious jewelry, stones and currency can be imported only as accompanied baggage and must be declared with the customs at the airport. The declaration will be required for presentation to the customs authorities at the time of departure

##### IMPORT OF WINE AND SPIRITS:

Only one litre is allowed to import for personal consumption per person. All in excess is subject to duties and taxes.

#### Documents required for customs clearance of motor vehicles

##### DIPLOMATS:

- Technical passport/Certificate of title
- POA from local employer
- Official Diplomatic Note approved by MFA
- Pro-forma invoice
- Temporary import declaration
- Insurance
- Engine volume up to 3,5 litres, vehicle not older than 5 years
- Only white color cars are allowed

##### FOREIGNERS:

- Technical passport/Certificate of title
- Engine volume up to 3,5 litres, vehicle not older than 5 years
- Only white color cars are allowed
- Export declaration on leaving Turkmenistan
- Permanent import declaration
- Insurance
- State vehicle inspection

- Permission from Trans Inspection
- Receipt of plates in State Vehicle Inspection
- Permanent import of vehicles is subject to full customs taxes and duties as per fixed customs tariff
- Vehicles can be imported on temporary basis with customs duty payment of 25+5\$ per hour for customs services
- Sale of the temporarily imported vehicle is restricted
- POA from local employer
- Passport copy
- Pro-forms invoice
- Certificate of Standard of State

##### RETURNING CITIZENS:

- State Vehicle Inspection
- Temporary/Permanently import declaration
- Insurance by State Vehicle Inspection
- Engine volume up to 3.5 litres, vehicle not older than 5 years
- Sport cars prohibited
- Receipt of plates in State Vehicle Inspection
- Permission of Operation Department of Ashgabat Customs Office
- Export declaration on leaving TM

#### Pets

- Waybill
- Vaccination certificate
- Veterenary certificate
- Pet passport

- Only DIP status pet owners may import pets as unaccompanied cargo
- Pet weight and cage dimensions (net/gross)
- Import/export permission

#### Special requirements for customs regulations

- Wildlife objects
- Antiques,
- Printed media and books

- Turkmenistan citizens should keep a copy of their arrival declaration
- Objects of art require special export/import permissions from local authorities

**ROUTING:** to Turkmenistan

**SURFACE:** via Hamburg, Bremerhaven ports, Germany; Riga, Latvia and Poti port, Georgia

**AIR:** via Ashgabat, Turkmenistan; Dubai, UAE; Baku, Azerbaijan; Frankfurt, Germany

**NOTE:** Globalink offers scheduled air freight, FCL/LCL services on the above mentioned routes.  
Rates are available upon request. Please send requests to [removals@globalinklogistics.com](mailto:removals@globalinklogistics.com)

DESTINATION RATE SCHEDULE

REF: GT\_12/24

SURFACE SHIPMENTS

FCL/LCL SHIPMENTS • Density 6.5lbs

Rates are quoted in US Dollars per gross hundred pounds (GCWT)	From terminal Ashgabat to residence Ashgabat							
	min chargeable per Shipment up to 1000 lbs	1001 — 2000lbs	2001 — 3000lbs	3001 — 4000lbs	4001 — 5000lbs	5001 — 6000lbs	6001 — 8000lbs	Over 8001lbs
	600	70	55	55	45	40	30	25

VEHICLE

Rates in US Dollars	From terminal Ashgabat to handover at Globalink Warehouse in Ashgabat	
	One vehicle in 1x20' container	
	700	

Destination Services Rates for the Shipment of Household Goods and Personal Effects  
ex. Arrival Ashgabat Rail Terminal, Turkmenistan

	1x20' Container	1x40' Container
Ashgabat, Turkmenistan	\$1700	\$2900
Estimated THC	\$300	\$300

**NOTE:** Please ask for consignment instructions and documentation requirements before sending the shipment in order to avoid any extra storage/demurrage charges.

AIR FREIGHT SHIPMENTS

AIR SHIPMENTS • Density 6.5lbs

Rates are quoted in US Dollars per gross hundred pounds (GCWT)	From airport Ashgabat to residence Ashgabat						
	Minimum chargeable per shipment up to 500 lbs	501 — 1000lbs	1001 — 2000lbs	2001 — 3000lbs	3001 — 4000lbs	4001 — 5000lbs	Over 5001lbs
	600	85	70	55	55	45	40

**NOTE:** Please pay attention to general terms and conditions on page 37.

**Special Requirements:** Consignee will pay the amount of custom duties as per the actual in US Dollars to Turkmenistan customs directly as Globalink cannot cover such charges.



## USEFUL INFORMATION & CUSTOMS REGULATIONS

### COUNTRY

### UKRAINE

#### FOREIGNERS/DIPLOMATS:

- Packing list
- Waybill
- Separate list of art objects
- Passport copy
- Visa copy
- Diplomatic card copy (for diplomats)
- Power of attorney on letterhead of local employer/notarized
- Employment confirmation
- Employment contract copy
- Pro-forma Invoice

#### RETURNING CITIZENS:

- UA Foreign passport copy (Passport pages with border entry stamp, if you have already arrived at UA, and work visa if any)
- UA National Passport (first, second, third, and the page with residence registration in Ukraine)
- Work permit or a copy of work agreement issued in the country of origin
- Ukrainian ID code
- Notarized power of attorney
- Pro-forma invoice

#### Documents required for customs clearance of household goods

- New items
- Alcohol
- Motor oils/paints
- Food plants
- Tobacco
- Pesticides
- CD/DVD discs 20 pieces only
- Scuba diving tanks
- Medicines
- Weapons of all kinds
- Pornography

- Drugs
- Radioactive/toxic materials
- Drones
- Skins/animal furs
- Jewelry
- Money/bank notes

#### Prohibited Articles

#### Documents required for customs clearance of motor vehicles

- Diplomatic card copy
- Local ID
- Technical passport copy/ Certificate of title copy
- Power of attorney from local employer

#### Pets

- Vaccination certificate
- Veterinary certificate
- Pet passport
- Owner's passport
- Waybill
- Blood test

#### Special requirements for customs regulations

- The consignee's organization mentioned on the waybill MUST be registered in Ukraine
- If there is no detailed inventory list for any shipment then the customs officer is entitled to make intensive inspection and evaluate every item by himself. This process might take from 3 to 10 working days and is beyond Globalink's control. This might lead to a substantial increase in total amount of customs fees and customs VAT to be paid by the consignee

**ROUTING:** to Ukraine

**SURFACE:** Hamburg and Bremerhaven, Germany ports, Riga, Latvia and Gdynia, Poland

**AIR:** Amsterdam Schiphol, The Netherlands; Warsaw, Poland

**NOTE:** Globalink offers scheduled air freight, FCL/LCL services on the above mentioned routes.  
Rates are available upon request. Please send requests to [removals@globalinklogistics.com](mailto:removals@globalinklogistics.com)

DESTINATION RATE SCHEDULE

REF: GT\_12/24

SURFACE SHIPMENTS

Rates for Transit Customs Clearance in Riga Port, Latvia  
and transportation to Kyiv Terminal, Ukraine

	1x20' Container	1x40' Container
Transit customs clearance in Riga Port and further trucking to Kyiv terminal	\$2850	\$4950
Destination services ex. Kyiv terminal to the residence in Kiev	\$1950	\$2650

NOTE: Please ask for consignment instructions and documentation requirements before sending the shipment in order to avoid any extra storage/demurrage charges.

FCL/LCL SHIPMENTS • Density 6.5lbs

Rates are quoted in US Dollars per gross hundred pounds (GCWT)	From terminal Kyiv to residence Kyiv							
	min chargeable per shipment up to 1000 lbs	1001 — 2000lbs	2001 — 3000lbs	3001 — 4000lbs	4001 — 5000lbs	5001 — 6000lbs	6001 — 8000lbs	Over 8001lbs
	700	75	50	45	35	30	30	25

VEHICLE

Rates in US Dollars	From terminal Kiev to handover at Globalink Warehouse in Kyiv	
	One vehicle in 1x20' container	
	600	

AIR FREIGHT SHIPMENTS

AIR SHIPMENTS • Density 6.5lbs

Rates are quoted in US Dollars per gross hundred pounds (GCWT)	From terminal Kiev to residence Kyiv						
	Minimum chargeable per shipment up to 500 lbs	501 — 1000lbs	1001 — 2000lbs	2001 — 3000lbs	3001 — 4000lbs	4001 — 5001lbs	over 5001lbs
	700	100	75	50	45	35	30

NOTE: Please pay attention to general terms and conditions on pages 37.

NOTE: Rates are valid till within a 50 kilometers delivery radius



## USEFUL INFORMATION & CUSTOMS REGULATIONS

### COUNTRY

### UZBEKISTAN

#### DIPLOMATS:

- Waybill
- Detailed Packing list
- Power of attorney from local employer
- Passport copy
- Copy of valid visa
- Diplomatic card copy

#### FOREIGNERS:

- Waybill
- Detailed Packing list
- Power of attorney from local employer
- Passport copy
- Visa copy
- Copy of work permit
- Copy of registration in UZ

#### RETURNING CITIZENS:

- Waybill
- Notarized Power of attorney
- Passport copy
- Detailed packing list
- Copy of registration in Uzbekistan
- Electronic digital signature

#### Documents required for customs clearance of household goods

**NOTE:** Import duties in Uzbekistan for Non-diplomatic shipments 4-7 usd/-per kg gross (billed as per actual +10% fee (min.50\$))

- Weapons of all kinds
- Pornography
- Drugs
- Toxic material/Radioactive material
- Wildlife specimen/trophies

**IMPORT OF WINE AND SPIRITS:**  
2 litres per shipment

#### Prohibited Articles

**NOTE:** Precious jewelry, stones and currency can be imported only as accompanied baggage and must be declared with the customs at the airport.

#### DIPLOMATS:

- Waybill
- Letter to diplomatic service
- Power of attorney from local employer
- Passport copy
- Visa copy
- Diplomatic card copy
- Pro-forma invoice
- Technical passport/ Certificate of title
- Only diplomatic shipments are free of customs duties and taxes
- Sale of temporarily imported cars is restricted

#### RETURNING CITIZENS:

- Waybill
- Notarized Power of attorney
- Passport copy
- Customs declaration (for export)
- Technical passport / Certificate of title
- Pro-forma invoice

#### FOREIGNERS:

- Waybill
- Letter to Customs committee Power of attorney from local employer/ notarized
- Passport copy
- Visa copy
- Accreditation card copy
- Technical passport /Certificate of title
- Pro-forma invoice

#### Documents required for customs clearance of motor vehicles

- Vaccination certificate
- Veterinary certificate
- AWB
- Letter to customs committee
- Owners passport
- Copy of the owners visa

- Copy of the pet's passport
- Copy of the accreditation card (non diplomats)
- Microchip
- Notarized POA

#### Pets

#### Special requirements for customs regulations

Customs clearance will take approx. 3-5 working days

**ROUTING:**to Uzbekistan

**SURFACE:**via Hamburg, Bremerhaven Ports, Germany and Riga, Latvia; Qingdao, China; Poti, Georgia; Vladivostok, Russia

**AIR:**via Tashkent, Uzbekistan and Dubai, UAE, Amsterdam, Schiphol, The Netherlands

**NOTE:**Globalink offers scheduled air freight, FCL/LCL services on the above mentioned routes.  
Rates are available upon request. Please send requests to [removals@globalinklogistics.com](mailto:removals@globalinklogistics.com)

## DESTINATION RATE SCHEDULE

REF: GT\_12/24

### SURFACE SHIPMENTS

#### FCL/LCL SHIPMENTS • Density 6.5lbs

Rates are quoted in US Dollars per gross hundred pounds (GCWT)	From terminal Tashkent to residence Tashkent							
	min chargeable per shipment up to 1000 lbs	1001 — 2000lbs	2001 — 3000lbs	3001 — 4000lbs	4001 — 5000lbs	5001 — 6000lbs	6001 — 8000lbs	Over 8001lbs
	350	40	35	30	25	20	15	15

#### VEHICLE

Rates in US Dollars	From terminal Tashkent to handover at Globalink Warehouse in Tashkent	
	One vehicle in 1x20' container	
	550	

#### Destination Services Rates for the Shipment of Household Goods and Personal Effects ex. Arrival Tashkent Rail Terminal, Uzbekistan

	1x20' Container	1x40' Container
Tashkent, Uzbekistan	\$1000	\$1600
Estimated THC	\$280	\$380

**NOTE:** Please ask for consignment instructions and documentation requirements before sending the shipment in order to avoid any extra storage/demurrage charges.

### AIR FREIGHT SHIPMENTS

#### AIR SHIPMENTS • Density 6.5lbs

Rates are quoted in US Dollars per gross hundred pounds (GCWT)	From airport Tashkent to residence Tashkent						
	Minimum chargeable per shipment up to 500 lbs	501 — 1000lbs	1001 — 2000lbs	2001 — 3000lbs	3001 — 4000lbs	4001 — 5000lbs	Over 5001lbs
	350	70	40	35	30	25	20

NOTE: Please pay attention to general terms and conditions on pages 37.

NOTE: Rates are valid till within a 50 kilometers delivery radius



## General Terms and Conditions:

- Rates are valid till 31<sup>st</sup> December 2024

## Important Notes:

- Completion of customs clearance formalities may take up to 3 - 5 working days

We are experiencing increased custom in spections of HHG shipments while transiting through Belorussian - Russian border points. Belorussia is the gateway for road and rail transportation between EU, Russia, Kazakhstan and The Central Asian Republics. As a member of Eurasian Customs Union, Belorussian customs has a legal right to inspect all transit shipments regard less of final destination of the shipment in the CIS territory. Our recent experiences show that general description of packed items on the packing list in not accepted by the Belorussian customs and triggers vigorous customs inspection of the shipments. In order to avoid border custom inspections and consequential confiscation of undeclared goods or penalties, we highly recommend to follow below instructions:

1. Please do not pack prohibited items (new items, alcohol, medicines without prescriptions, drugs, food items, materials containing terroristic information, weapons, etc). In case there are still new items, please make sure to remove original packaging or price tags. Only 3 liters of alcohol is allowed, make sure to put beverage name and description. Medicines must be listed in the inventory and packed with prescriptions.
2. Do not allow undeclared goods in the Packing list. Avoid inserting general description of packed items on the packing list, such as Kitchen ware, Clothes, Bedroom items, PBO, Miscellaneous, etc.
3. Please mention exact name or description of the item and quantities on the packing list, such as 12 Water Glasses, 5 T-shirts, 1 Guitar, 10 Books, etc.
4. Electronic items — please put technical description, name and model. Some electronic appliances are prohibited/restricted or require special permission, so please check with us in advance prior to pack out of the shipment.
5. Please mention exact quantity of items on the packing list.
6. Please mention exact gross weight of each individual carton on the packing list.

### IMPORTANT NOTE:

Please convey this information to your packing crews and origin agents prior to the pack-out of any shipment moving to Russia, Kazakhstan and The Central Asia Republics by surface.  
Please email us the packing lists prior to dispatching the shipment so we can verify it to make sure it meets customs requirements.  
Please do not dispatch the shipments without our green light!

## Rates for sample

- Pick up from the airport/terminal
- Customs clearance for used household goods and personal effects
- Transportation within citylimits up to door
- Inside delivery
- Unpacking and same day debris removal

## Rates for destination services for the vehicles include:

- Customs clearance
- Delivery of the vehicle to our warehouse
- Unloading of the vehicle from the container/truck
- Release of the vehicle to the consignee at ourwarehouse

## Our Rates do not include:

- Insurance coverage
- Crating into wooden liftvans for truck shipments
- THC and storage at airport/port/terminal while customs clearance
- Import customs duties, fees and taxes related to import of HHG
- Customs declaration fee
- Optional storage at Globalink warehouse
- Truck and/or container demurrage/detention charges
- Any charges related to assessments, demurrage and labor for holding/handling shipment for customs inspection process
- Extensive customs inspection and/or X-Ray examination
- Warehouse in/out handling charges in case of storage request at Globalink warehouse
- Delivery to multiple addresses
- Charges for difficult access, including delivery above 2nd floor
- Any charges related to servicing electrical appliances
- Complex furniture assembly
- Handling of pianos, safes, heavy lifts
- Usage of outside elevators, longcarriers
- Reinstallation of antennas, satellite dishes, airconditioners
- Charges for handyman services and 3rd party services
- Vehicle servicing, inspections, deregistration and registration with local Traffic Police
- Overtime charges for delivery after normal working hours, weekends and public holidays
- Vehicle pick up/delivery to residence/(de-) registration with local Traffic Police
- Wharfage (port dues)
- Delivery order

## NOTE

- Any charges paid by Globalink will be billed as per actual +10% pre—financing fee
- Rates will be billed either as per actual gross weight in standard wooden liftvans or constructive weight 1 cbm=220 lbs or 1 cuft=6.5 lbs depending whichever is greater.
- General terms and conditions as well as customs regulations are subject to change, thusplease check them prior to dispatch of the shipment